



US008145980B2

(12) **United States Patent**  
**Eroz et al.**

(10) **Patent No.:** **US 8,145,980 B2**  
(45) **Date of Patent:** **\*Mar. 27, 2012**

(54) **METHOD AND SYSTEM FOR DECODING LOW DENSITY PARITY CHECK (LDPC) CODES**

(75) Inventors: **Mustafa Ero****z**, Germantown, MD (US);  
**Feng-Wen Sun**, Germantown, MD (US);  
**Lin-Nan Lee**, Potomac, MD (US)

(73) Assignee: **DTV****G Licensing, Inc.**, El Segundo, CA (US)

(\*) Notice: Subject to any disclaimer, the term of this patent is extended or adjusted under 35 U.S.C. 154(b) by 1156 days.  
  
This patent is subject to a terminal disclaimer.

(21) Appl. No.: **11/938,110**

(22) Filed: **Nov. 9, 2007**

(65) **Prior Publication Data**  
US 2008/0065947 A1 Mar. 13, 2008

**Related U.S. Application Data**

(63) Continuation of application No. 11/059,938, filed on Feb. 17, 2005, now Pat. No. 7,398,455, which is a continuation of application No. 10/454,439, filed on Jun. 4, 2003, now Pat. No. 7,020,829.

(60) Provisional application No. 60/393,457, filed on Jul. 3, 2002, provisional application No. 60/398,760, filed on Jul. 26, 2002, provisional application No. 60/403,812, filed on Aug. 15, 2002, provisional application No. 60/421,505, filed on Oct. 25, 2002, provisional application No. 60/421,999, filed on Oct. 29, 2002, provisional application No. 60/423,710, filed on Nov. 4, 2002, provisional application No. 60/440,199, filed on Jan. 15, 2003, provisional application No. 60/447,641, filed on Feb. 14, 2003, provisional application No. 60/451,548, filed on Mar. 3, 2003, provisional application No. 60/456,220, filed on Mar. 20, 2003.

(51) **Int. Cl.**  
**H03M 13/00** (2006.01)  
**H03M 13/03** (2006.01)

(52) **U.S. Cl.** ..... **714/780**; 714/794

(58) **Field of Classification Search** ..... 714/780,  
714/794

See application file for complete search history.

(56) **References Cited**

U.S. PATENT DOCUMENTS  
4,709,377 A \* 11/1987 Martinez et al. .... 375/265  
(Continued)

FOREIGN PATENT DOCUMENTS  
EP 1093231 A1 4/2001  
(Continued)

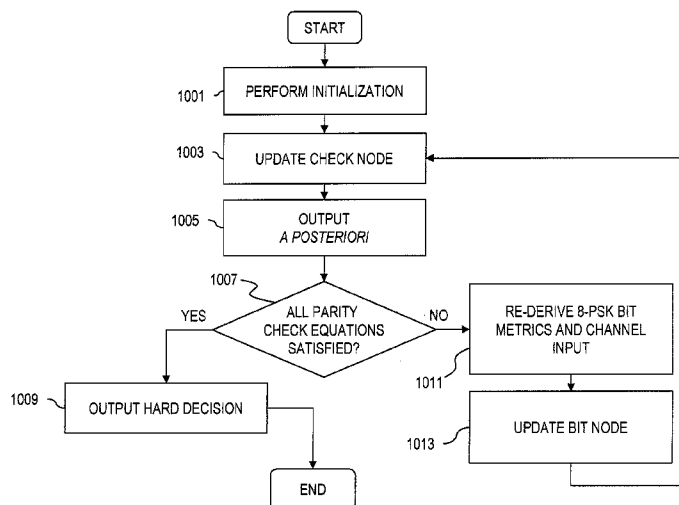
OTHER PUBLICATIONS  
Chinese Office Action dated Sep. 19, 2008 in Chinese Patent Application No. 03132884.9 filed Jul. 24, 2003 by Mustafa Ero**z** et al.  
(Continued)

*Primary Examiner* — Joseph D Torres

(57) **ABSTRACT**

An approach is provided for transmitting messages using low density parity check (LDPC) codes. Input messages are encoded according to a structured parity check matrix that imposes restrictions on a sub-matrix of the parity check matrix to generate LDPC codes. The LDPC codes are transmitted over a radio communication system (e.g., satellite network), wherein a receiver communicating over the radio communication system is configured to iteratively decode the received LDPC codes according to a signal constellation associated with the LDPC codes. The receiver is configured to iteratively regenerating signal constellation bit metrics after one or more decoding iterations.

**17 Claims, 16 Drawing Sheets**



U.S. PATENT DOCUMENTS

5,371,471	A *	12/1994	Chennakeshu et al. ....	329/304
5,467,132	A	11/1995	Fazel et al.	
5,949,796	A *	9/1999	Kumar .....	370/529
6,031,874	A	2/2000	Chennakeshu et al.	
6,115,427	A	9/2000	Calderbank et al.	
6,216,200	B1	4/2001	Yeager	
6,292,917	B1	9/2001	Sinha et al.	
6,405,338	B1	6/2002	Sinha et al.	
6,438,180	B1*	8/2002	Kavcic et al. ....	375/341
6,510,536	B1*	1/2003	Crozier et al. ....	714/755
6,518,892	B2*	2/2003	Shen et al. ....	341/50
6,539,367	B1*	3/2003	Blanksby et al. ....	706/14
6,751,770	B2*	6/2004	Morelos-Zaragoza .....	714/781
6,769,091	B2	7/2004	Classon et al.	
6,785,863	B2	8/2004	Blankenship et al.	
6,789,227	B2	9/2004	De Souza et al.	
6,829,308	B2	12/2004	Eroz et al.	
6,857,097	B2*	2/2005	Yedidia et al. ....	714/752
6,895,547	B2	5/2005	Eleftheriou et al.	
6,901,119	B2*	5/2005	Cideciyan et al. ....	375/341
6,938,196	B2*	8/2005	Richardson et al. ....	714/752
6,963,622	B2	11/2005	Eroz et al.	
6,965,652	B1	11/2005	Burd et al.	
6,985,536	B2	1/2006	Oelcer et al.	
7,000,177	B1*	2/2006	Wu et al. ....	714/801
7,017,106	B2*	3/2006	Shen et al. ....	714/801
7,072,417	B1	7/2006	Burd et al.	
7,116,710	B1	10/2006	Jin et al.	
7,165,205	B2	1/2007	Blankenship et al.	
7,178,082	B2	2/2007	Yu et al.	
7,184,486	B1*	2/2007	Wu et al. ....	375/262
7,191,378	B2	3/2007	Eroz et al.	
7,421,644	B2	9/2008	Mantha et al.	
7,620,880	B2	11/2009	Niu et al.	
2002/0021770	A1*	2/2002	Beerel et al. ....	375/340
2002/0048329	A1*	4/2002	Tran et al. ....	375/340
2002/0051499	A1*	5/2002	Cameron et al. ....	375/295
2002/0071504	A1*	6/2002	Chen et al. ....	375/341
2002/0136318	A1*	9/2002	Gorokhov et al. ....	375/261
2002/0141507	A1	10/2002	Morgan et al.	
2003/0033570	A1	2/2003	Khannanov et al.	
2003/0037298	A1*	2/2003	Eleftheriou et al. ....	714/752
2003/0091098	A1	5/2003	Manninen et al.	
2003/0126551	A1	7/2003	Mantha et al.	
2003/0207696	A1	11/2003	Willeneger et al.	
2004/0098659	A1	5/2004	Bjerke et al.	
2004/0196861	A1	10/2004	Rinchuso et al.	
2004/0221223	A1	11/2004	Yu et al.	
2005/0149841	A1	7/2005	Kyung et al.	
2005/0154958	A1	7/2005	Xia et al.	
2005/0235195	A1	10/2005	Choi et al.	
2005/0257124	A1	11/2005	Richardson et al.	
2005/0265387	A1	12/2005	Khojastepour et al.	
2005/0278606	A1	12/2005	Richardson et al.	
2006/0156181	A1	7/2006	Ha et al.	
2008/0282127	A1	11/2008	Mantha et al.	

FOREIGN PATENT DOCUMENTS

WO	03/001726	1/2003
WO	2004019268 A	3/2004
WO	2004/077733	9/2004

OTHER PUBLICATIONS

Non-final Office Action dated Sep. 30, 2009 in U.S. Appl. No. 10/961,124, filed Oct. 8, 2004 by Mustafa Eroz et al.  
 Notice of Allowance dated May 5, 2008 in U.S. Appl. No. 11/635,998, filed Dec. 8, 2006 by Mustafa Eroz et al.  
 U.S. Appl. No. 10/961,124, filed Oct. 8, 2004, Mustafa Eroz, Non-final Office Action dated Nov. 27, 2007.  
 U.S. Appl. No. 11/635,998, filed Dec. 8, 2006, Mustafa Eroz, Non-final Office Action dated Nov. 13, 2007.  
 Final Rejection dated Oct. 28, 2008 in U.S. Appl. No. 10/961,124, filed Oct. 8, 2004 by Mustafa Eroz et al.  
 Echard, Rich; Chang, Shih-Chun; "The Pi-Rotation Low-Density Parity Check Codes"; Proceedings, IEEE Global Telecommunica-

tions Conference, GlobeCom '01; San Antonio, Texas; Nov. 25-29, 2001; pp. 980-984; XP001099251.  
 Ping, Li; Leung, W.K.; Phamdo, Nam; "Low Density Parity Check Codes with Semi-Random Parity Check Matrix"; Electronics Letters, IEE; Stevenage, Great Britain; vol. 35, No. 1; Jan. 7, 1999; pp. 38-39; XP006011650 ISSN: 0013-5194.  
 EPO Summons to attend oral proceedings dated Mar. 5, 2010 in European Patent Application No. 05789316.6 filed Aug. 3, 2005 by Mustafa Eroz et al.  
 Esti; "Digital Video Broadcasting (DVB); Second Generation Framing Structure, Channel Coding and Modulation Systems for Broadcasting, Interactive Services, News Gathering and Other Broadband Satellite Applications"; ETSI Drafts, LIS; Jun. 1, 2004; XP002325753; ISSN: 0000-0002; pp. 21-23.  
 Lu, Ben; Yue, Guosen; Wang, Xiaodong; "Performance Analysis and Design Optimization of LDPC-Coded MIMO OFDM Systems"; IEEE Transactions on Signal Processing, IEEE Service Center; New York, New York, USA; vol. 52, No. 2; Feb. 1, 2004; pp. 348-361; XP011105722; ISSN: 1053-587X.  
 Lee, Heung-No; "LDPC Coded Modulation MIMO OFDM Transceiver: Performance Comparison with MAP Equalization"; Proceedings, IEEE Vehicular Technology Conference, VTC, 2003-Spring; Jeju, Korea; vol. 2; Apr. 22-25, 2003; pp. 1178-1182; XP010862634; ISBN: 978-0-7803-7757-8.  
 Supplemental European Search Report dated Apr. 1, 2009 in European patent Application No. 05789316.6 filed Aug. 3, 2005 by Mustafa Eroz et al.  
 Non-final Office Action dated Apr. 3, 2009 in U.S. Appl. No. 10/961,124, filed Oct. 8, 2004 by Mustafa Eroz et al.  
 Non-final Office Action dated Aug. 13, 2008 in U.S. Appl. No. 11/201,796, filed Aug. 10, 2005 by Mustafa Eroz et al.  
 Final Rejection dated Dec. 31, 2008 in U.S. Appl. No. 11/201,796, filed Aug. 10, 2005 by Mustafa Eroz et al.  
 Non-final Office Action dated Sep. 23, 2008 in U.S. Appl. No. 11/186,265, filed Jul. 21, 2005 by Mustafa Eroz et al.  
 Non-final Office action dated Aug. 16, 2010 in U.S. Appl. No. 12/195,512, filed Aug. 21, 2008 by Mustafa Eroz et al.  
 Notice of Allowance dated Aug. 24, 2010 in U.S. Appl. No. 10/961,124, filed Oct. 8, 2004 by Mustafa Eroz et al.  
 Canadian Office action dated Jan. 22, 2010 in Canadian Patent Application No. 2457420 filed Jul. 3, 2003 by Mustafa Eroz et al.; 3 pages.  
 Tullberg, H.M.; Siegel, P.H.; "Bit-Interleaved Coded Modulation for Delay-Constrained Mobile Communication Channels"; Proceedings, IEEE Vehicular Technology Conference; VTC 2000; Tokyo, Japan; IEEE, Inc.; New York, US; vol. 3 of 3; Conf. 51; May 15-18, 2000; pp. 2212-2216; XP000968397.  
 Final Rejection dated Feb. 27, 2009 in U.S. Appl. No. 10/353,230, filed Jan. 28, 2003 by Mustafa Eroz et al.  
 Final Rejection dated Feb. 25, 2010 in U.S. Appl. No. 10/961,124, filed Oct. 8, 2004 by Mustafa Eroz et al.  
 EPO Summons to attend oral proceedings dated Mar. 11, 2010 in European Patent Application No. 03763216.3 filed Jul. 3, 2003 by Mustafa Eroz et al.  
 Summons to Oral Proceedings dated Oct. 13, 2009 in European Patent Application No. 03763495.3 filed Jul. 3, 2003 by Mustafa Eroz et al.  
 Howland, C. and Blanksby, A.; "Parallel Decoding Architectures for Low Density Parity Check Codes"; 2001 IEEE International Symposium on Circuits and Systems (ISCAS 2001); vol. 4; pp. IV-742-IV-745.  
 Non-final Office Action dated May 30, 2009 in U.S. Appl. No. 11/201,796, filed Aug. 11, 2005 by Mustafa Eroz et al.  
 Canadian Office action dated May 7, 2010 in Canadian Patent Application No. 2456485 filed Jul. 3, 2003 by Mustafa Eroz et al.  
 European Search Report dated May 10, 2010 in European divisional Patent Application No. 10001217.8 filed Jul. 3, 2003 (parent filing date of European Patent Application No. 03763495.3) by Mustafa Eroz et al.  
 Bond, J.W.; Hui, S.; Schmidt, H.; "Constructing Low-Density Parity-Check Codes"; EuroComm 2000; Information Systems for Enhanced Public Safety and Security; IEEE/AFCEA; May 17, 2000;

- Piscataway, New Jersey, USA; IEEE LNKD-DOI:10.1109/EURCOM2000.874812; Jan. 1, 2000; pp. 260-262; XP010515080; ISBN: 978-0-7803-6323-6.
- Bond, J.W.; Hui, S.; Schmidt, H.; "Constructing Low-Density Parity-Check Codes with Circulant Matrices"; Information Theory and Networking Workshop; 1999; Metsovo, Greece; Jun. 27-Jul. 1, 1999; p. 52; XP010365561; ISBN:978-0-7803-5954-3.
- Yi, Yu; Hou, Jia; Lee, Moon Ho; "Design of Semi-Algebraic Low-Density Parity-Check (SA-LDPC) Codes for Multilevel Coded Modulation"; Proceedings, IEEE International Conference on Parallel and Distributed Computing, Applications and Technologies; PDCAT 2003; Aug. 27, 2003; pp. 931-934; XP010661473; ISBN: 978-0-7803-7840-7.
- Vasic, Bane; Djordjevic, Ivan B.; "Low-Density Parity Check Codes for Long-Haul Optical Communication Systems"; IEEE Photonics Technology Letters; IEEE Photonics Technology Letters; IEEE Service Center; Piscataway, New Jersey, USA; vol. 14, No. 8; Aug. 1, 2002; XP011067271; ISSN:1041-1135.
- Johnson, Sarah J.; Weller, Steven R.; "A Family of Irregular LDPC Codes with Low Encoding Complexity"; IEEE Communications Letters; IEEE Service Center; Piscataway, New Jersey, USA; vol. 7, No. 2; Feb. 1, 2003; XP011066488; ISSN:1089-7798.
- Japanese Appeal Decision of Rejection dated Sep. 28, 2009 in Japanese Patent Application No. 2004-562643 filed Jul. 3, 2003 by Mustafa Eroz et al.; 9 pages.
- EPO Summons to attend oral proceedings dated Nov. 17, 2009 in European Patent Application No. 03254214.4 filed Jul. 2, 2003 by Mustafa Eroz et al.; 14 pages.
- Hou, Jilei; Siegel, Paul H.; Milstein, Laurence B.; Pfister, Henry D.; "Design of Low-Density Parity-Check Codes for Bandwidth Efficient Modulation"; Proceedings of the 2001 IEEE Information Theory Workshop; Cairns, Australia; Sep. 2-7, 2001; pp. 24-26.
- Douillard, Catherine; Jezequel, Michel; Berrou, Claude; "Iterative Correction of Intersymbol Interference: Turbo-Equalization"; European Transactions on Telecommunications and related Technologies, AEI; Milano, Italy; vol. 6, No. 5; Sep.-Oct. 1995; pp. 507-511.
- Li, Xiaodong; Ritcey, James A.; "Bit-Interleaved Coded Modulation with Iterative Decoding"; 1999 IEEE International Conference on Communications; ICC 1999; pp. 858-863.
- Narayanaswami, Ravi; "Coded Modulation with Low Density Parity Check Codes"; Thesis submitted to Texas A&M University; Jun. 2001; XP-002271230.
- Non-final Office Action dated Jun. 11, 2008 in U.S. Appl. No. 10/961,124, filed Oct. 8, 2004 by Mustafa Eroz et al.
- Notice of Allowance dated Jan. 21, 2011 in U.S. Appl. No. 12/195,512, filed Aug. 21, 2008 by Mustafa Eroz et al.
- Notice of Allowance dated Feb. 9, 2011 in U.S. Appl. No. 11/710,761, filed Feb. 26, 2007 by Mustafa Eroz et al.
- Chinese Office action dated Jul. 22, 2011 in Chinese Patent Application No. 03800852.1 filed Jul. 3, 2003 by Mustafa Eroz et al.
- Non-final Office action dated May 19, 2011 in U.S. Appl. No. 11/938,016, filed Nov. 9, 2007 by Mustafa Eroz et al.
- Japanese Office action dated Apr. 19, 2011 in Japanese Patent Application No. 2007-525661 filed Aug. 3, 2005 by Mustafa Eroz et al.
- Non-final Office action dated Apr. 25, 2011 in U.S. Appl. No. 12/967,894, filed Dec. 14, 2010 by Mustafa Eroz et al.
- Non-final Office action dated May 16, 2011 in U.S. Appl. No. 12/498,968, filed Jul. 7, 2009 by Mustafa Eroz et al.
- Notice of Allowance dated Oct. 17, 2011 in U.S. Appl. No. 12/498,968, filed Jul. 7, 2009 by Mustafa Eroz et al.
- Notice of Allowance dated Sep. 7, 2011 in U.S. Appl. No. 11/938,016, filed Nov. 9, 2007 by Mustafa Eroz et al.
- Rejection Decision dated Nov. 11, 2011 in Chinese Patent Application No. 03800852.1 filed Jul. 3, 2003 by Mustafa Eroz et al.
- Futaki, Hisashi; Ohtsuki, Tomoaki; "Low-Density Parity-Check (LDPC) Coded OFDM Systems with M-PSK"; Proceedings of the IEEE 55th Vehicular Technology Conference; 2002; VTC Spring; May 6, 2002; vol. 2; pp. 1035-1039.
- Notice of Allowance dated Nov. 16, 2011 in U.S. Appl. No. 12/967,894, filed Dec. 14, 2010 by Mustafa Eroz et al.

\* cited by examiner

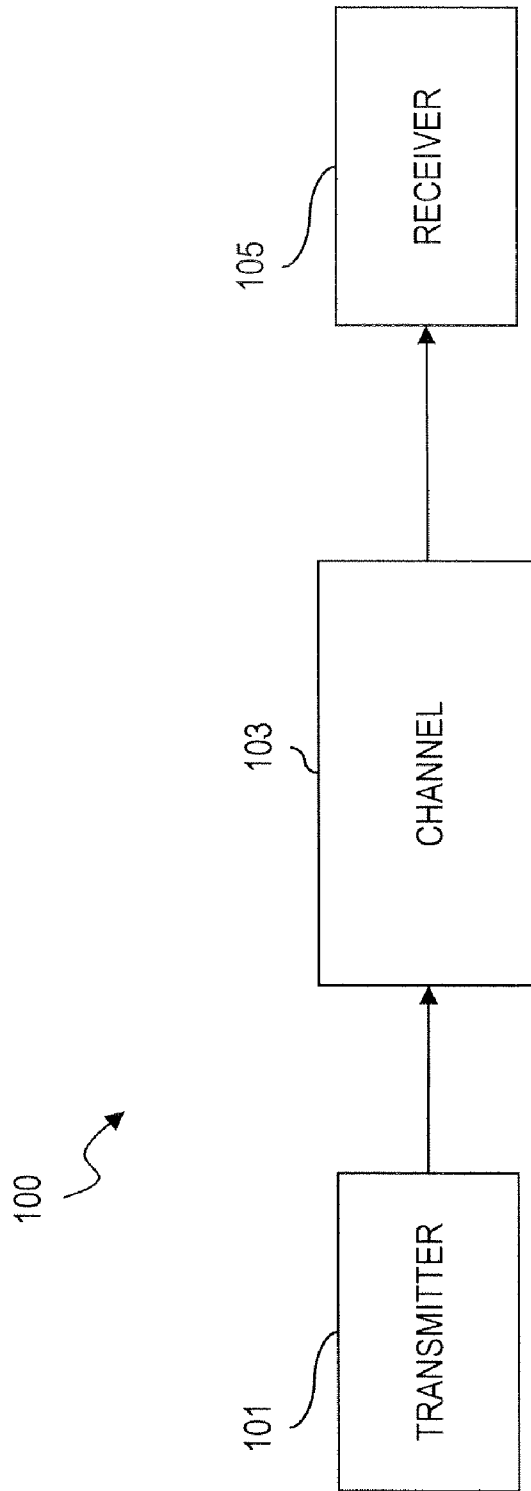


FIG. 1

FIG. 2

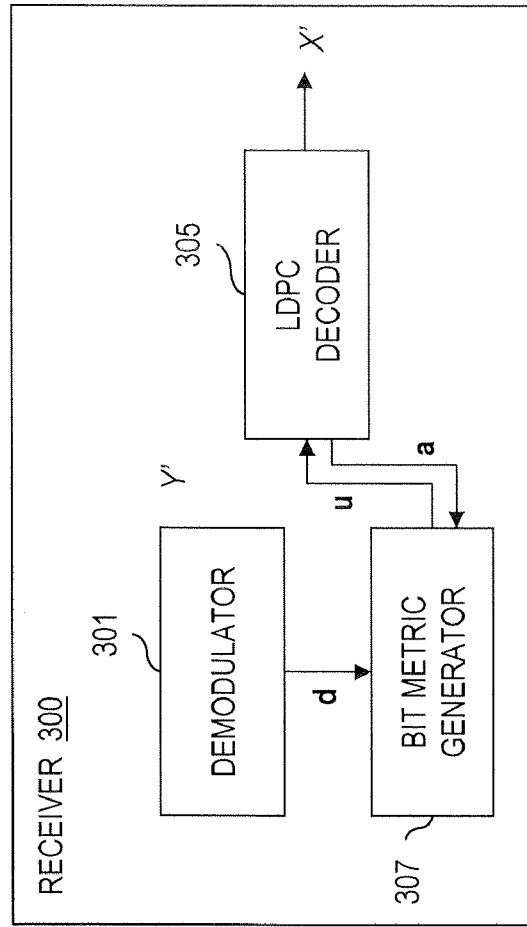
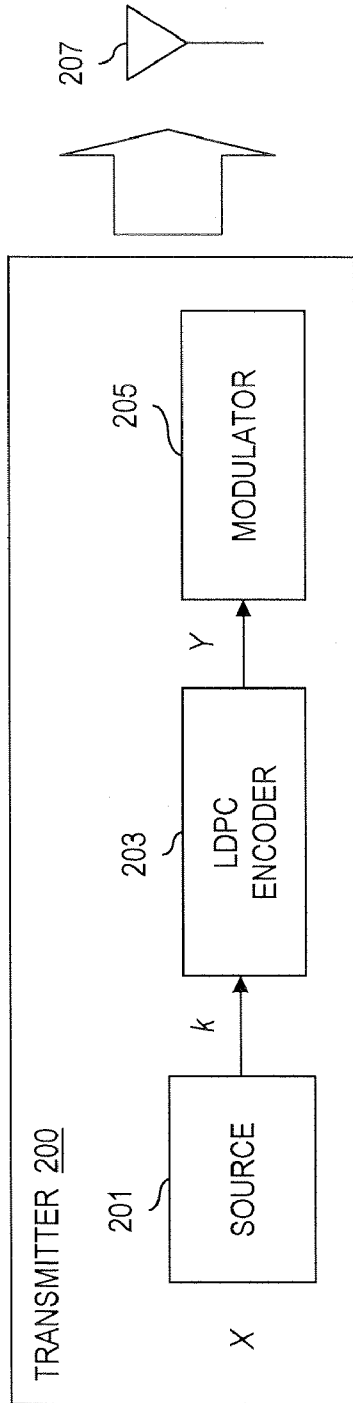


FIG. 3



FIG. 7

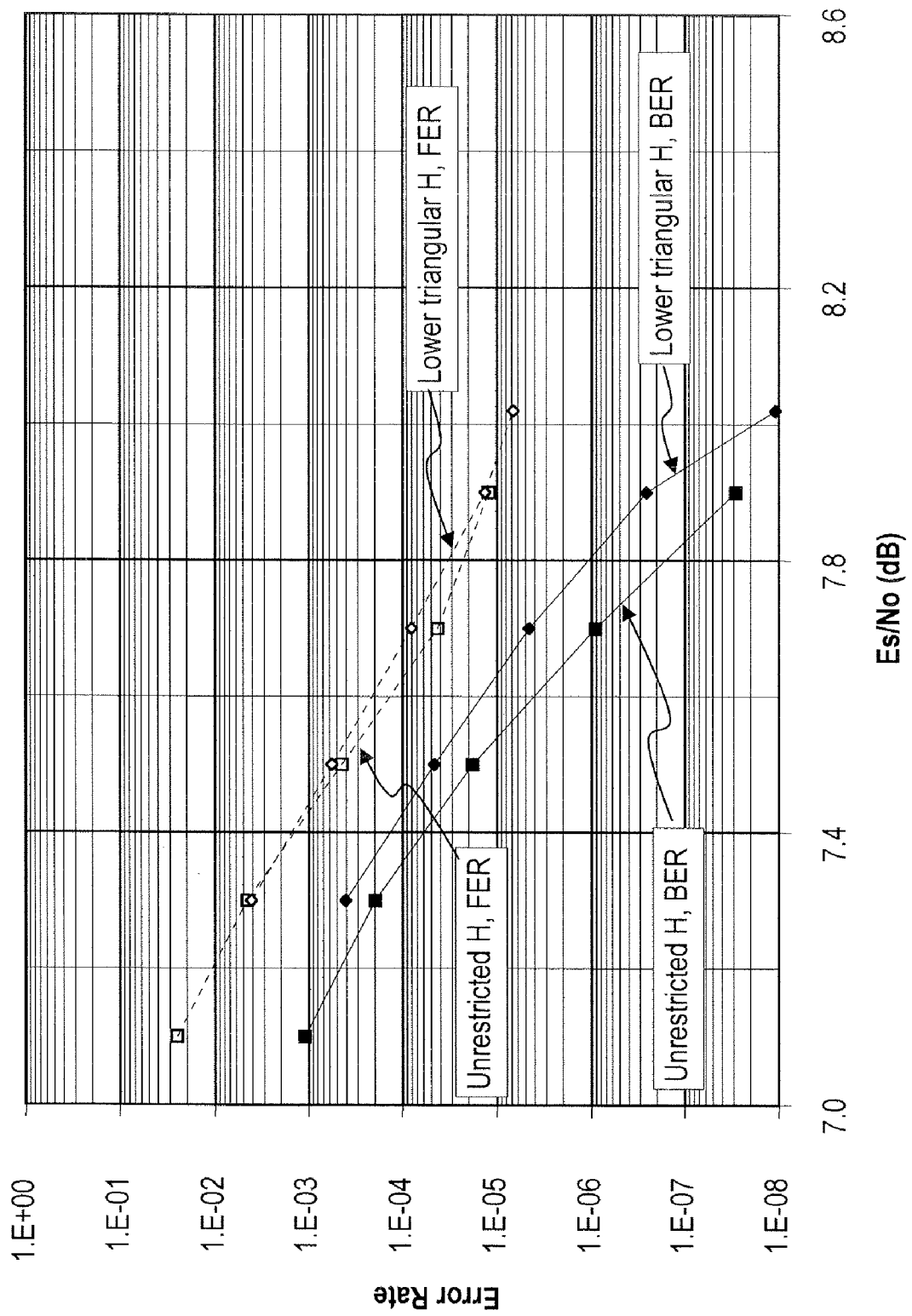


FIG. 8A

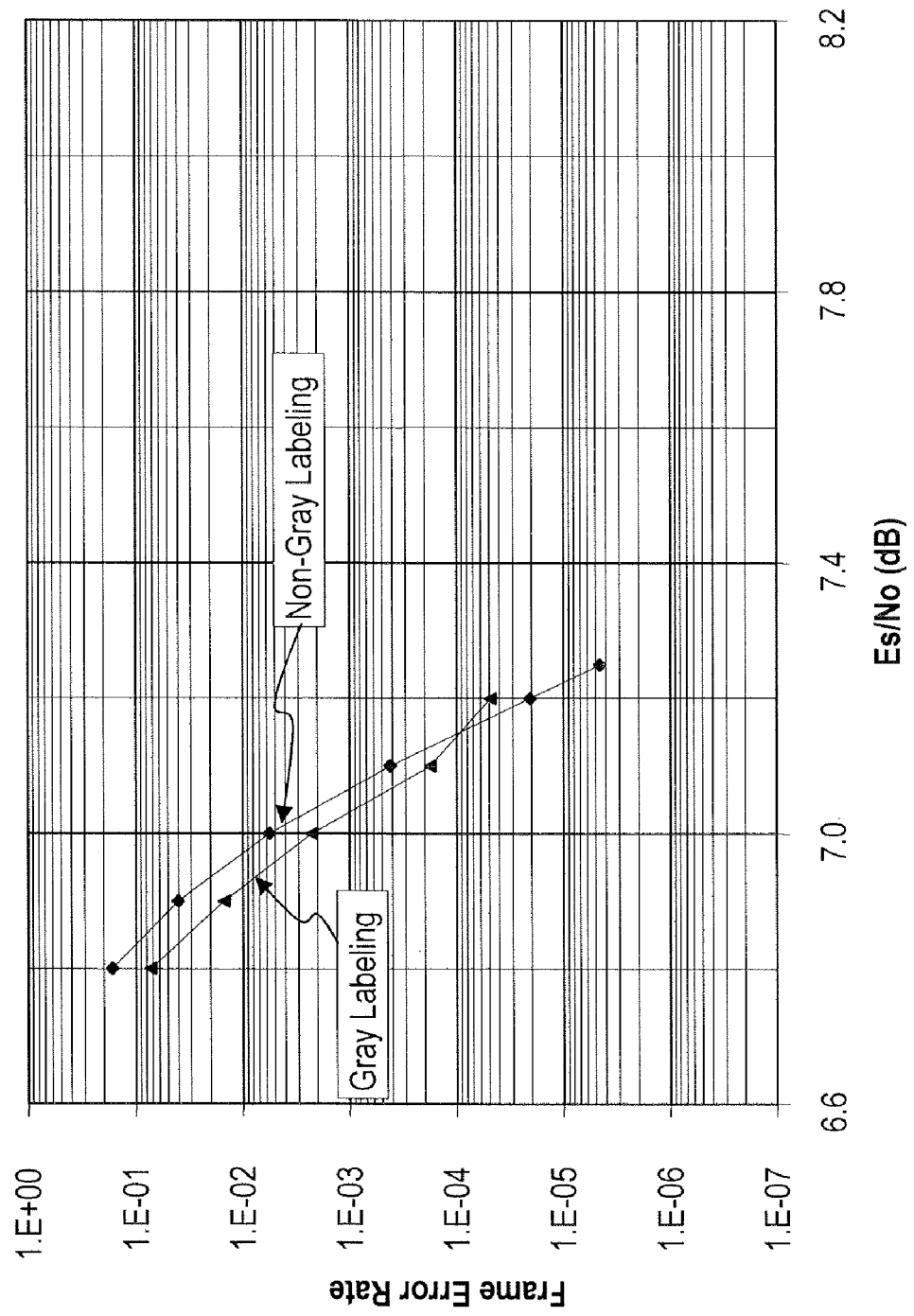
011 ° s<sub>3</sub>      010  
s<sub>2</sub>      s<sub>1</sub> ° 001  
110 ° s<sub>6</sub>      s<sub>0</sub> ° 000  
111 ° s<sub>7</sub>      s<sub>5</sub> ° 101  
s<sub>4</sub> °  
100

011 ° s<sub>7</sub>      010  
s<sub>5</sub>      s<sub>4</sub> ° 001  
111 ° s<sub>6</sub>      s<sub>0</sub> ° 000  
110 ° s<sub>2</sub>      s<sub>1</sub> ° 101  
s<sub>3</sub> °  
100

FIG. 8B



FIG. 9



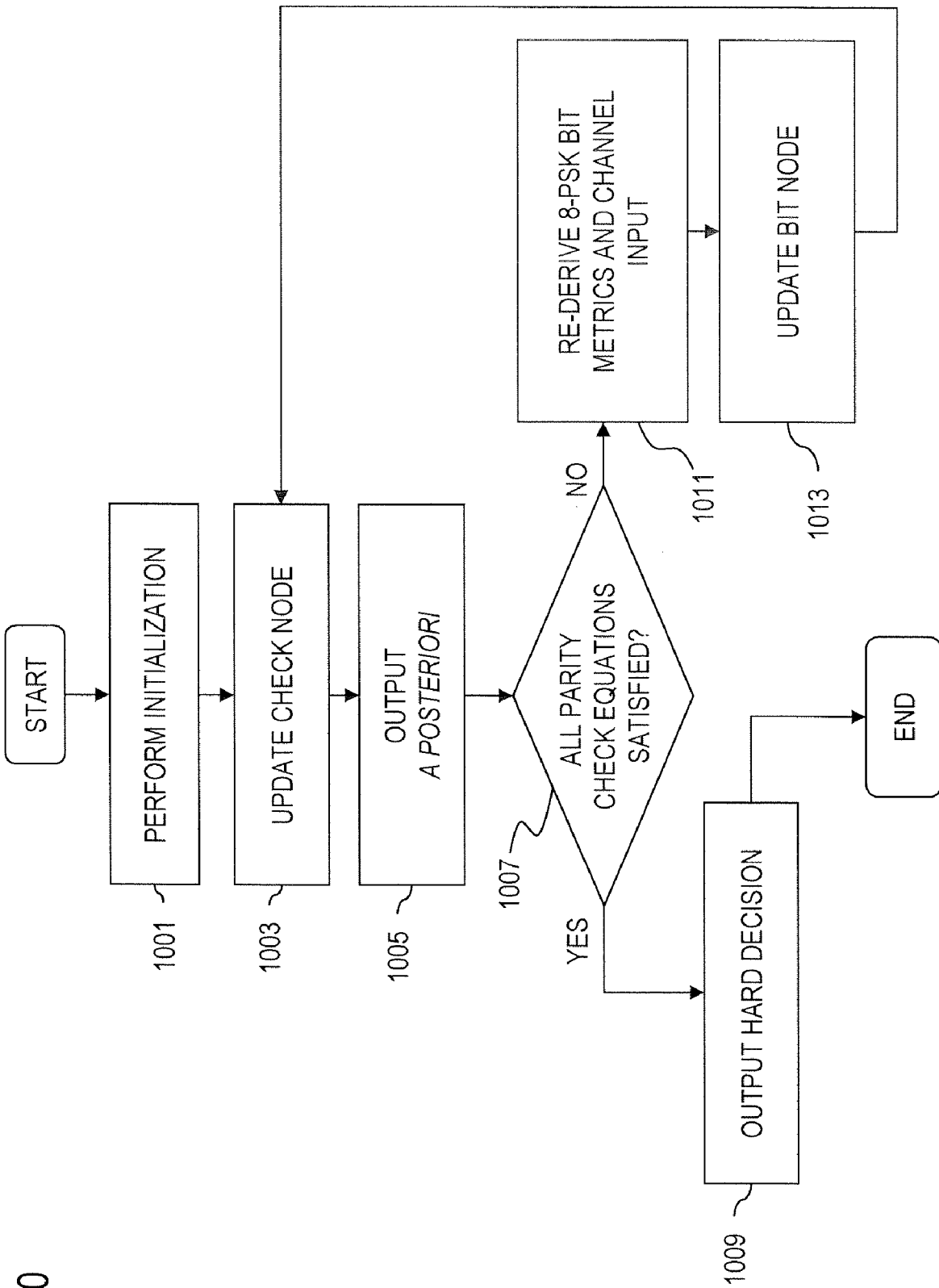


FIG. 10

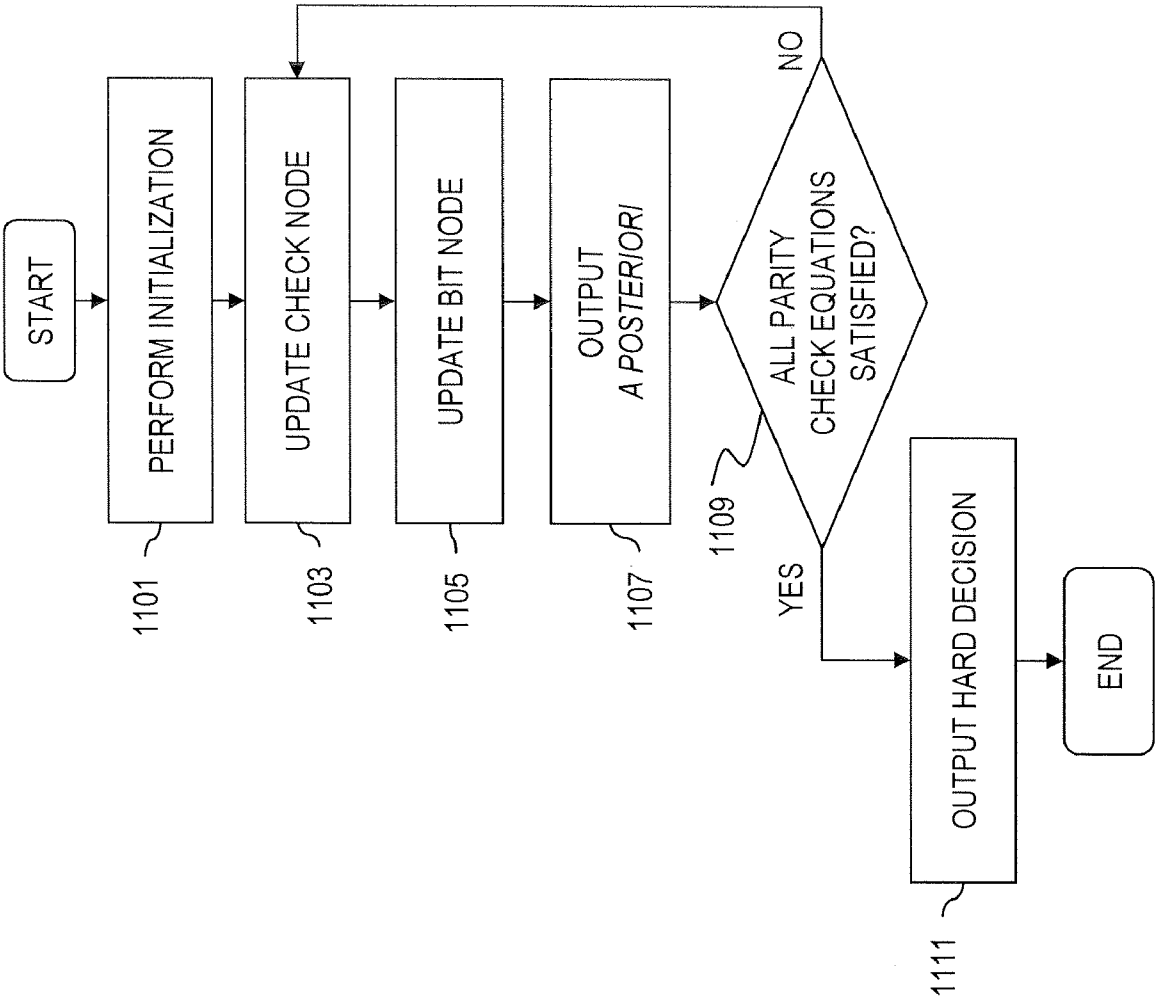


FIG. 11

FIG. 12A

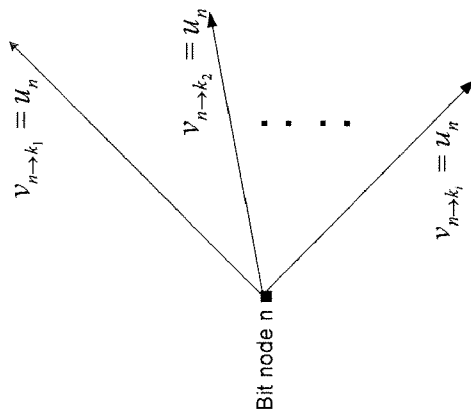
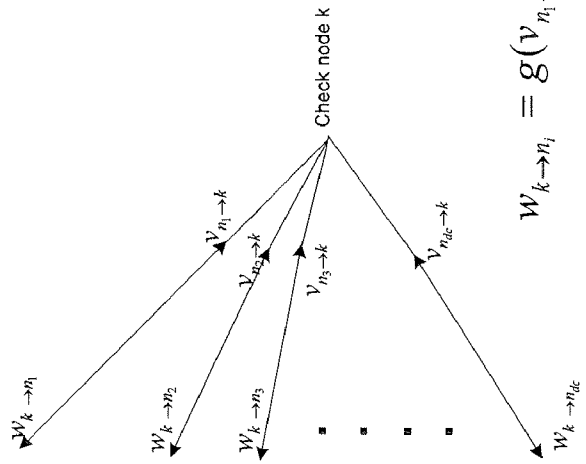
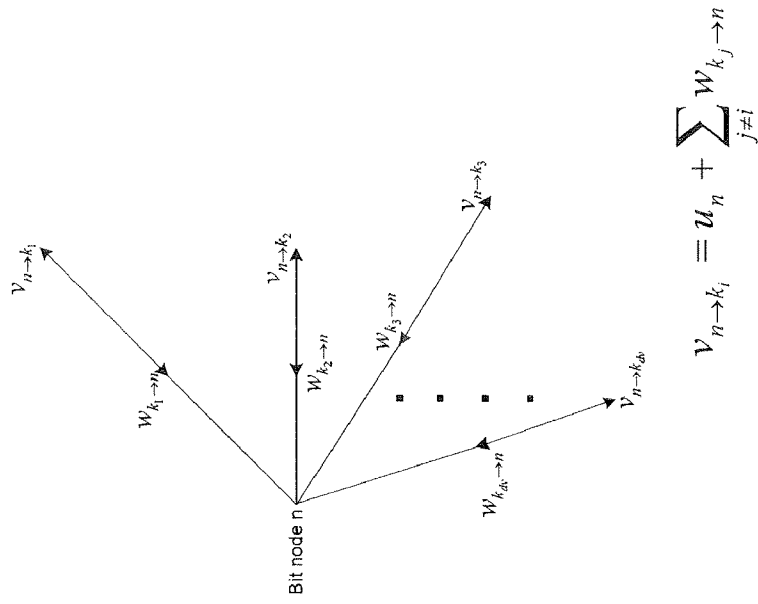


FIG. 12C



$$W_{k \to n_i} = g(V_{n_1 \to k}, V_{n_2 \to k}, \dots, V_{n_{i-1} \to k}, V_{n_{i+1} \to k}, \dots, V_{n_{d_c} \to k})$$

FIG. 12B

FIG. 13A

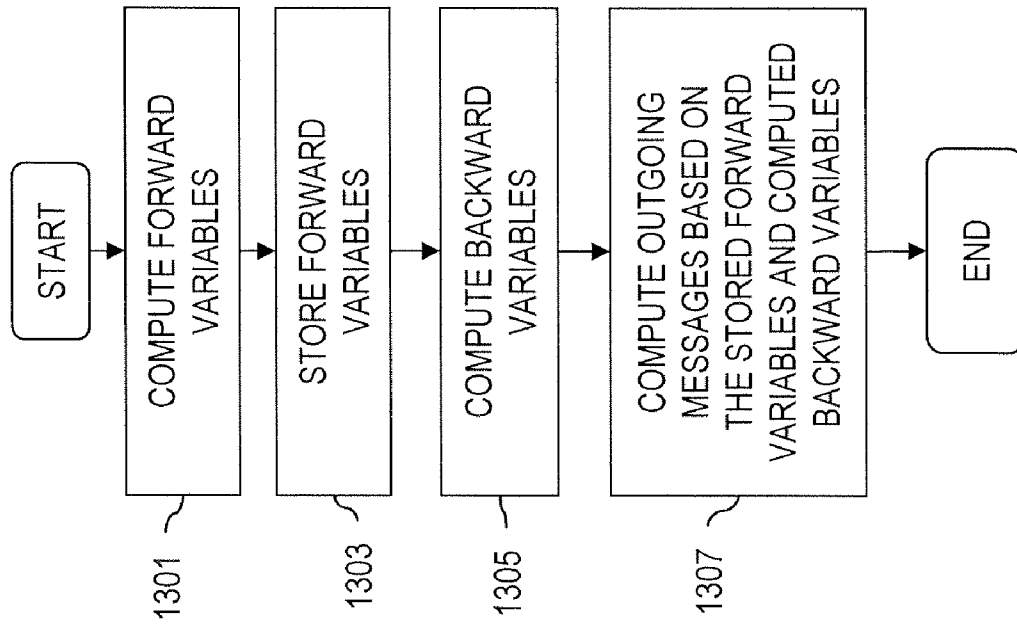


FIG. 13B

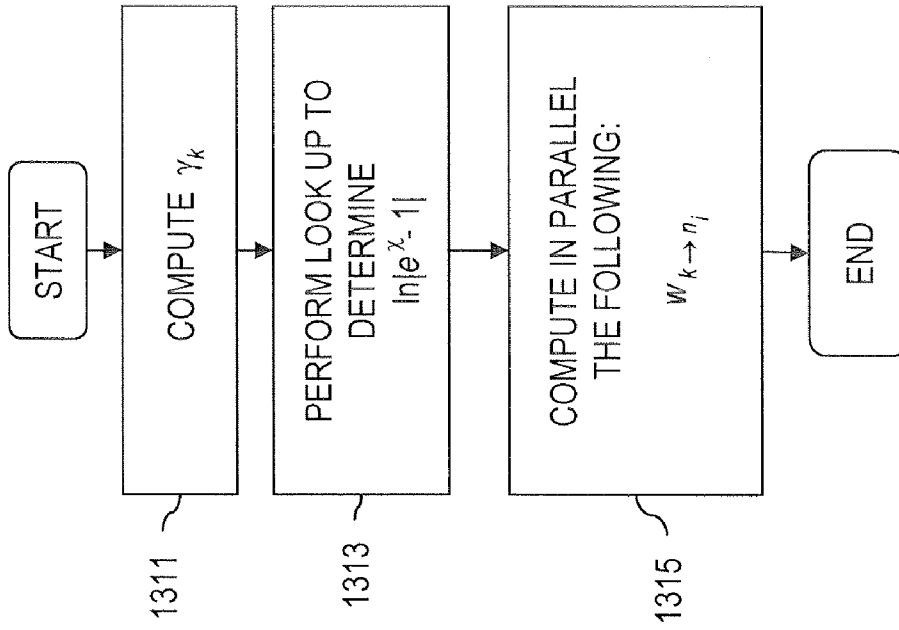


FIG. 14A

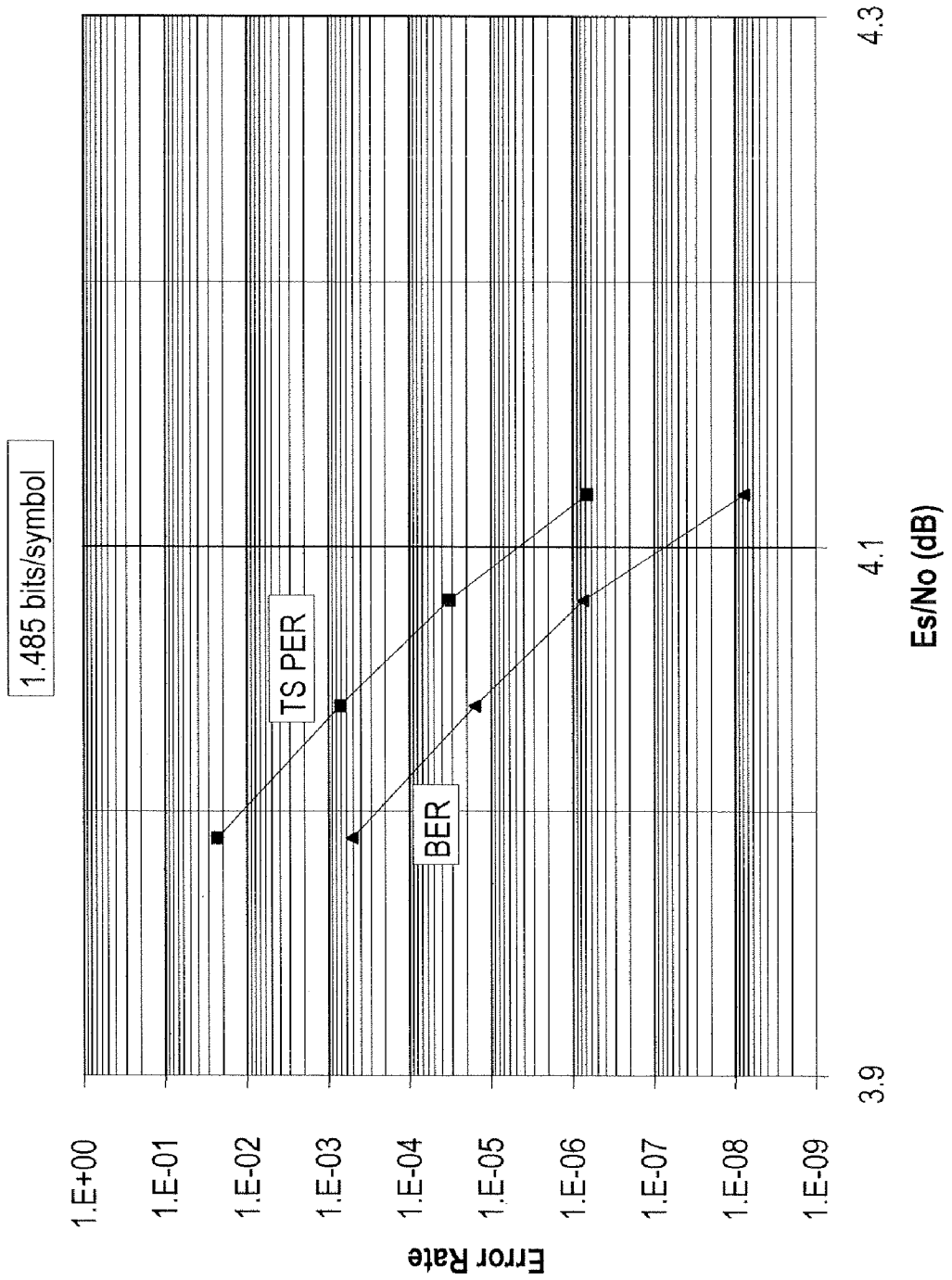


FIG. 14B

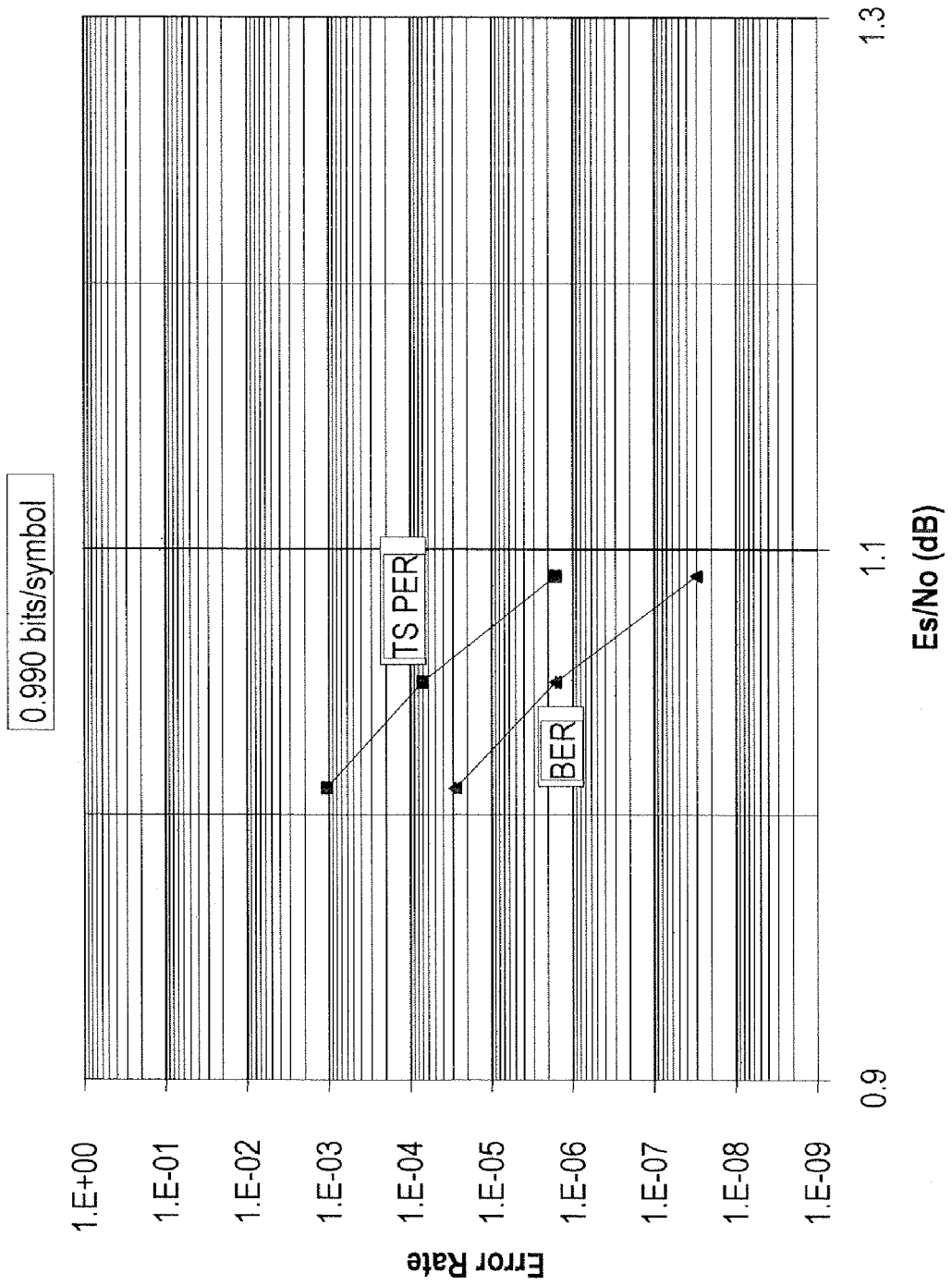


FIG. 14C

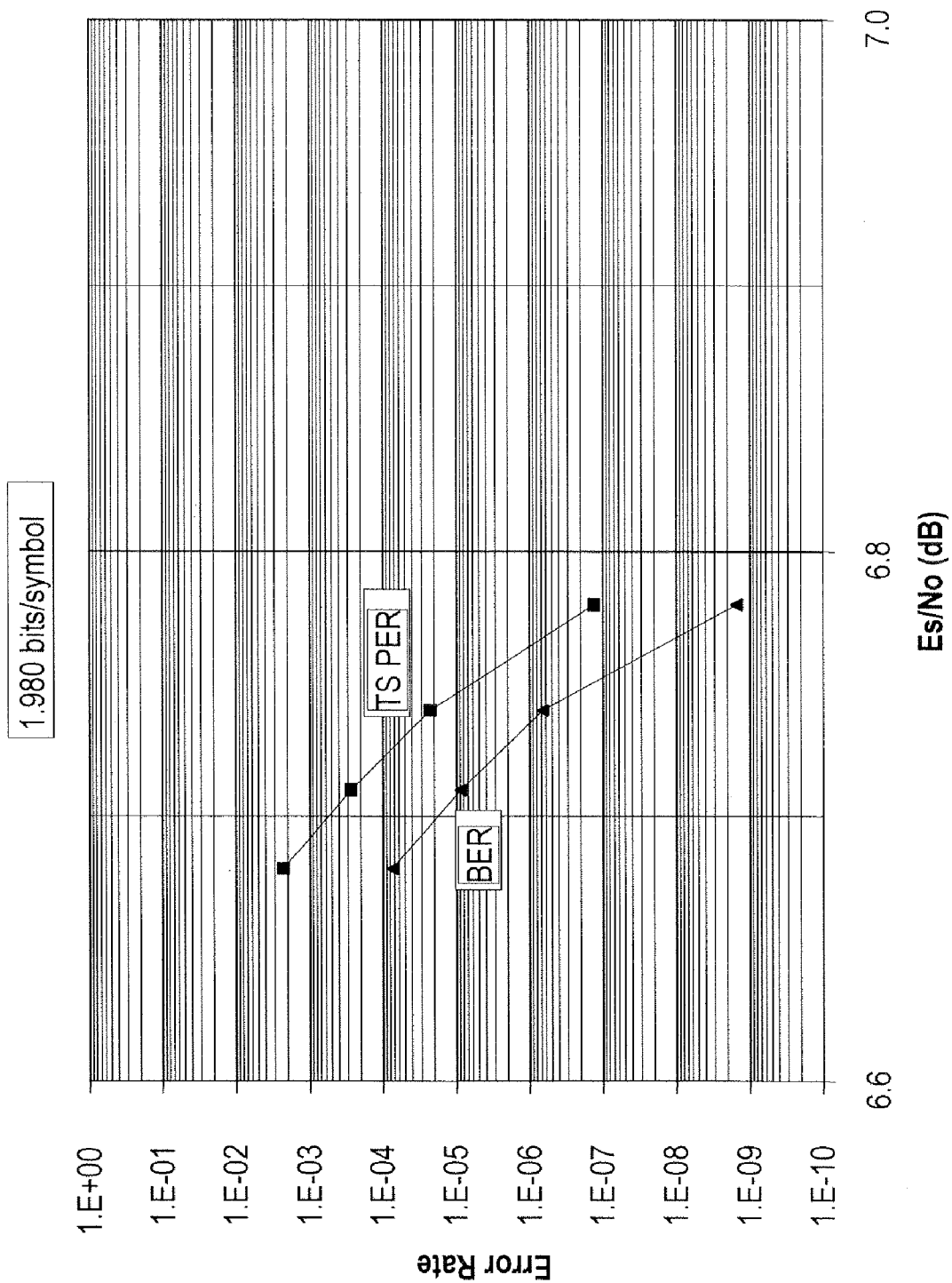




FIG. 15A

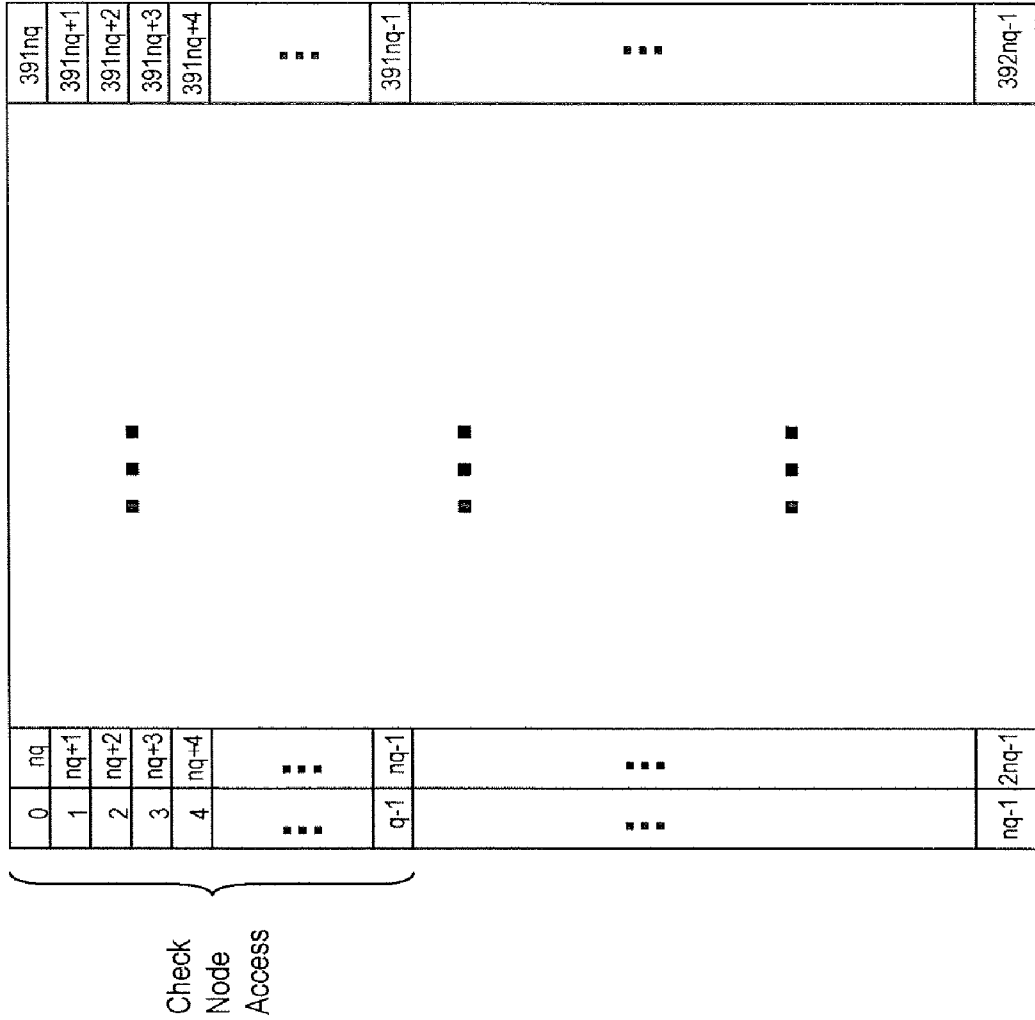
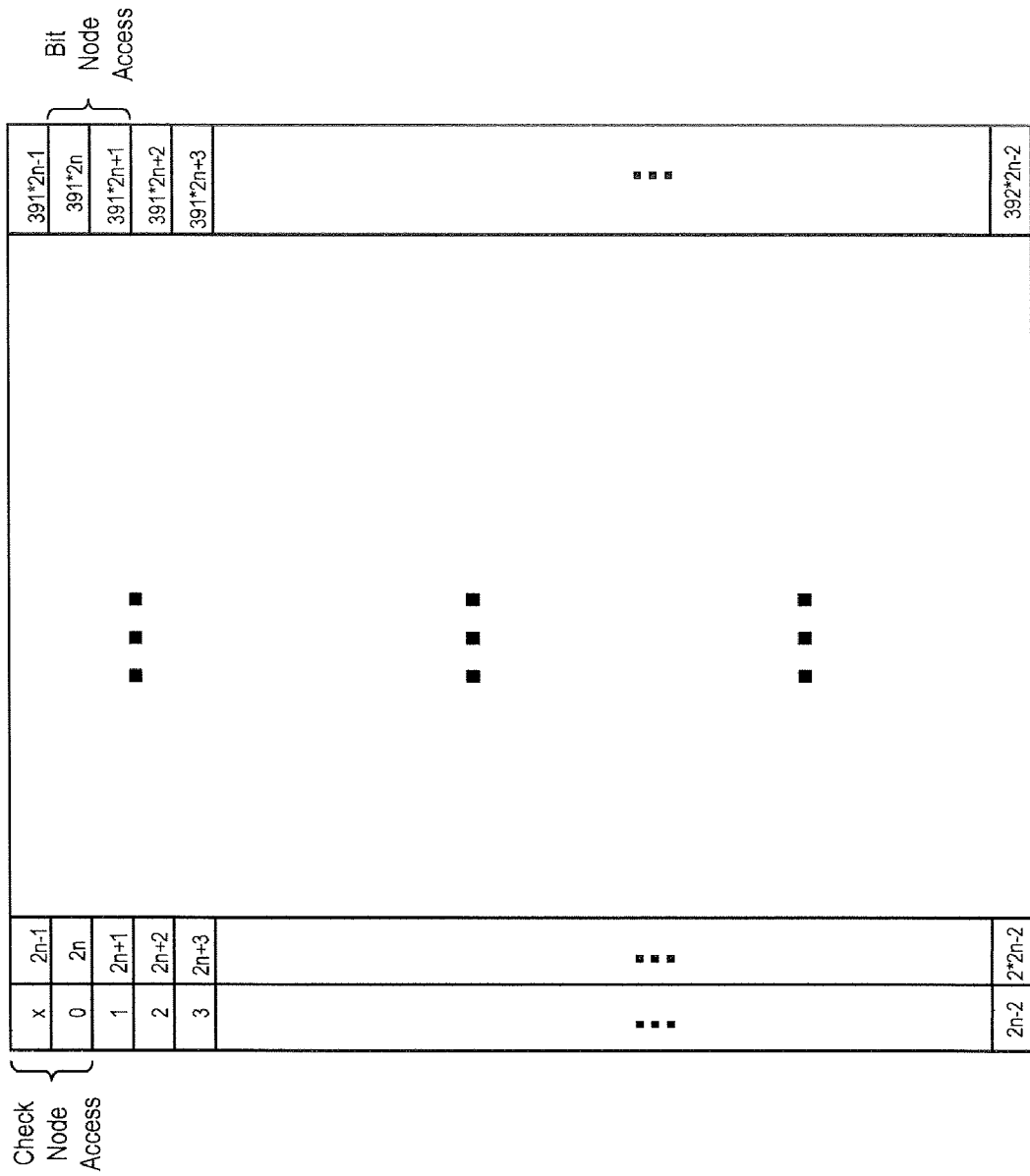


FIG. 15B



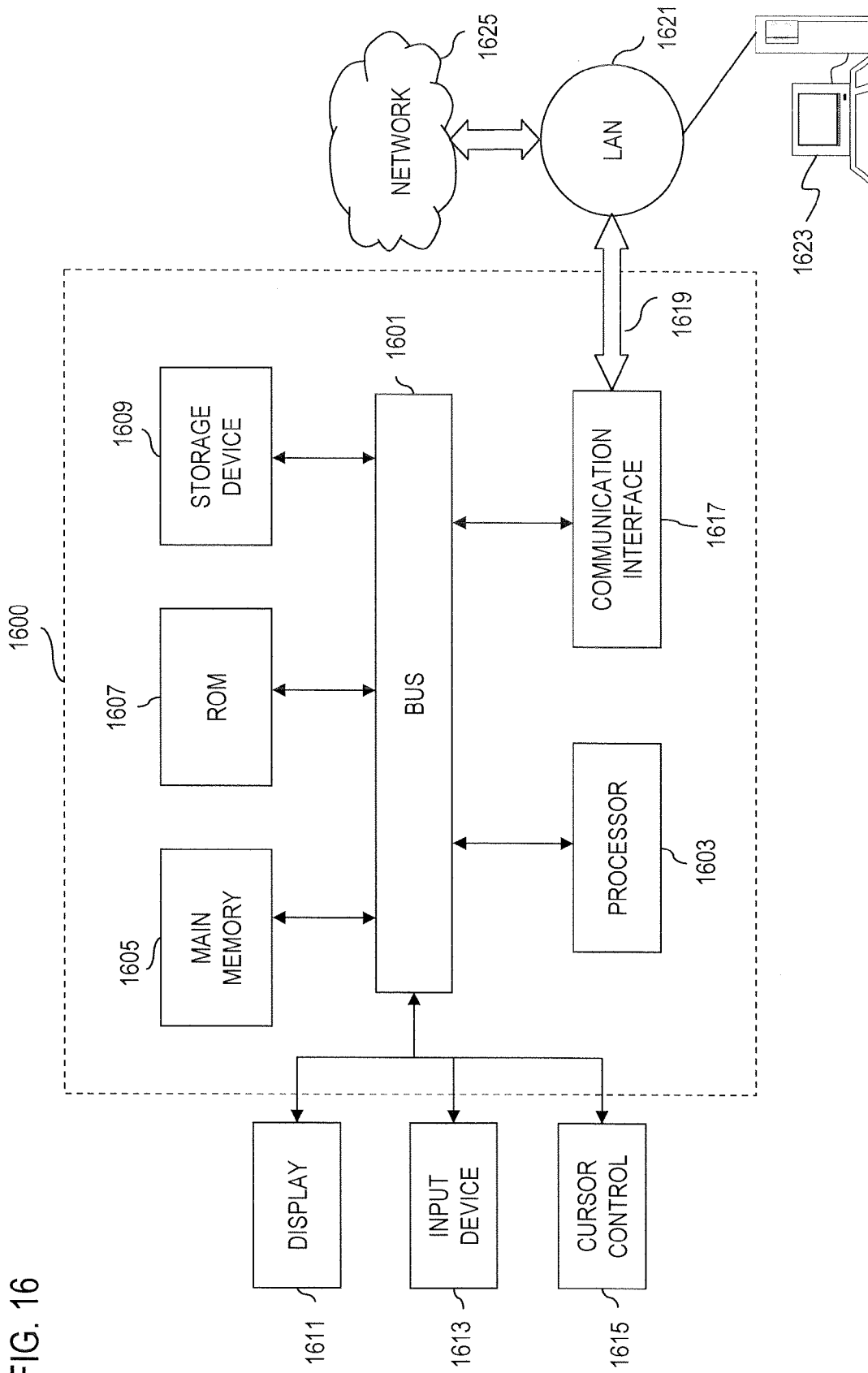


FIG. 16

## METHOD AND SYSTEM FOR DECODING LOW DENSITY PARITY CHECK (LDPC) CODES

### RELATED APPLICATIONS

This application is a continuation of U.S. Patent Application (Ser. No. 11/059,938), filed Feb. 17, 2005, entitled "Method and System for Decoding Low Density Parity Check (LDPC) Codes, which is a continuation of U.S. Patent Application (Ser. No. 10/454,439), filed Jun. 4, 2003, now U.S. Pat. No. 7,020,829, entitled "Method and System for Decoding Low Density Parity Check (LDPC) Codes, which claims the benefit of the earlier filing date under 35 U.S.C. §119(e) of, U.S. Provisional Patent Application (Ser. No. 60/393,457), filed Jul. 3, 2002, entitled "Code Design and Implementation Improvements for Low Density Parity Check Codes," U.S. Provisional Patent Application (Ser. No. 60/398,760), filed Jul. 26, 2002, entitled "Code Design and Implementation Improvements for Low Density Parity Check Codes," U.S. Provisional Patent Application (Ser. No. 60/403,812), filed Aug. 15, 2002, entitled "Power and Bandwidth Efficient Modulation and Coding Scheme for Direct Broadcast Satellite and Broadcast Satellite Communications," U.S. Provisional Patent Application (Ser. No. 60/421,505), filed Oct. 25, 2002, entitled "Method and System for Generating Low Density Parity Check Codes," U.S. Provisional Patent Application (Ser. No. 60/421,999), filed Oct. 29, 2002, entitled "Satellite Communication System Utilizing Low Density Parity Check Codes," U.S. Provisional Patent Application (Ser. No. 60/423,710), filed Nov. 4, 2002, entitled "Code Design and Implementation Improvements for Low Density Parity Check Codes," U.S. Provisional Patent Application (Ser. No. 60/440,199), filed Jan. 15, 2003, entitled "Novel Solution to Routing Problem in Low Density Parity Check Decoders," U.S. Provisional Patent Application (Ser. No. 60/447,641), filed Feb. 14, 2003, entitled "Low Density Parity Check Code Encoder Design," U.S. Provisional Patent Application (Ser. No. 60/451,548), filed Mar. 3, 2003, entitled "System and Method for Advanced Modulation and Coding," and U.S. Provisional Patent Application (Ser. No. 60/456,220), filed Mar. 20, 2003, entitled "Description LDPC and BCH Encoders"; the entireties of which are incorporated herein by reference.

### FIELD OF THE INVENTION

The present invention relates to communication systems, and more particularly to coded systems.

### BACKGROUND OF THE INVENTION

Communication systems employ coding to ensure reliable communication across noisy communication channels. These communication channels exhibit a fixed capacity that can be expressed in terms of bits per symbol at certain signal to noise ratio (SNR), defining a theoretical upper limit (known as the Shannon limit). As a result, coding design has aimed to achieve rates approaching this Shannon limit. One such class of codes that approach the Shannon limit is Low Density Parity Check (LDPC) codes.

Traditionally, LDPC codes have not been widely deployed because of a number of drawbacks. One drawback is that the LDPC encoding technique is highly complex. Encoding an LDPC code using its generator matrix would require storing a very large, non-sparse matrix. Additionally, LDPC codes require large blocks to be effective; consequently, even

though parity check matrices of LDPC codes are sparse, storing these matrices is problematic.

From an implementation perspective, a number of challenges are confronted. For example, storage is an important reason why LDPC codes have not become widespread in practice. Also, a key challenge in LDPC code implementation has been how to achieve the connection network between several processing engines (nodes) in the decoder. Further, the computational load in the decoding process, specifically the check node operations, poses a problem.

Therefore, there is a need for a LDPC communication system that employs simple encoding and decoding processes. There is also a need for using LDPC codes efficiently to support high data rates, without introducing greater complexity. There is also a need to improve performance of LDPC encoders and decoders. There is also a need to minimize storage requirements for implementing LDPC coding. There is a further need for a scheme that simplifies the communication between processing nodes in the LDPC decoder.

### SUMMARY OF THE INVENTION

These and other needs are addressed by the present invention, wherein an approach for decoding a structured Low Density Parity Check (LDPC) codes is provided. Structure of the LDPC codes is provided by restricting portion part of the parity check matrix to be lower triangular and/or satisfying other requirements such that the communication between processing nodes of the decoder becomes very simple. Also, the approach can advantageously exploit the unequal error protecting capability of LDPC codes on transmitted bits to provide extra error protection to more vulnerable bits of high order modulation constellations (such as 8-PSK (Phase Shift Keying)). The decoding process involves iteratively regenerating signal constellation bit metrics into an LDPC decoder after each decoder iteration or several decoder iterations. The above arrangement provides a computational efficient approach to decoding LDPC codes.

According to one aspect of an embodiment of the present invention, a method for decoding low density parity check (LDPC) codes is disclosed. The method includes receiving a priori probability information based on distance vector information relating to distances between received noisy symbol points and symbol points of a signal constellation associated with the LDPC codes. The method also includes transmitting a posteriori probability information based on the a priori probability information. The method includes determining whether parity check equations associated with the LDPC codes are satisfied according to the a priori probability and the a posteriori probability information. Additionally, the method includes selectively regenerating the signal constellation bit metrics based on the determining step. Further, the method includes outputting decoded messages based on the regenerated signal constellation bit metrics.

According to another aspect of an embodiment of the present invention, a system for decoding low density parity check (LDPC) codes is disclosed. The system includes means for receiving a priori probability information based on distance vector information relating to distances between received noisy symbol points and symbol points of a signal constellation associated with the LDPC codes. The system also includes means for transmitting a posteriori probability information based on the a priori probability information. Additionally, the system includes means for determining whether parity check equations associated with the LDPC codes are satisfied according to the a priori probability and the a posteriori probability information. The system includes

means for selectively regenerating the signal constellation bit metrics based on the determination. Further, the system includes means for outputting decoded messages based on the regenerated signal constellation bit metrics.

According to another aspect of an embodiment of the present invention, a receiver for decoding low density parity check (LDPC) codes is disclosed. The receiver includes a bit metric generator configured to generate a priori probability information based on distance vector information relating to distances between received noisy symbol points and symbol points of a signal constellation associated with the LDPC codes. The receiver also includes a decoder configured to output a posteriori probability information based on the a priori probability information received from the bit metric generator, wherein the decoder is further configured to determine whether parity check equations associated with the LDPC codes are satisfied according to the a priori probability and the a posteriori probability information. The decoder outputs decoded messages based on a regenerated signal constellation bit metrics if the parity check equations are not satisfied.

According to another aspect of an embodiment of the present invention, a method for transmitting messages using low density parity check (LDPC) codes is disclosed. The method includes encoding input messages according to a structured parity check matrix that imposes restrictions on a sub-matrix of the parity check matrix to generate LDPC codes. The method also includes transmitting the LDPC codes over a radio communication system, wherein a receiver communicating over the radio communication system is configured to iteratively decode the received LDPC codes according to a signal constellation associated with the LDPC codes. The receiver is configured to iteratively regenerating signal constellation bit metrics after one or more decoding iterations.

Still other aspects, features, and advantages of the present invention are readily apparent from the following detailed description, simply by illustrating a number of particular embodiments and implementations, including the best mode contemplated for carrying out the present invention. The present invention is also capable of other and different embodiments, and its several details can be modified in various obvious respects, all without departing from the spirit and scope of the present invention. Accordingly, the drawing and description are to be regarded as illustrative in nature, and not as restrictive.

#### BRIEF DESCRIPTION OF THE DRAWINGS

The present invention is illustrated by way of example, and not by way of limitation, in the figures of the accompanying drawings and in which like reference numerals refer to similar elements and in which:

FIG. 1 is a diagram of a communications system configured to utilize Low Density Parity Check (LDPC) codes, according to an embodiment of the present invention;

FIG. 2 is a diagram of an exemplary transmitter in the system of FIG. 1;

FIG. 3 is a diagram of an exemplary receiver in the system of FIG. 1;

FIG. 4 is a diagram of a sparse parity check matrix, in accordance with an embodiment of the present invention;

FIG. 5 is a diagram of a bipartite graph of an LDPC code of the matrix of FIG. 4;

FIG. 6 is a diagram of a sub-matrix of a sparse parity check matrix, wherein the sub-matrix contains parity check values

restricted to the lower triangular region, according to an embodiment of the present invention;

FIG. 7 is a graph showing performance between codes utilizing unrestricted parity check matrix (H matrix) versus restricted H matrix having a sub-matrix as in FIG. 6;

FIGS. 8A and 8B are, respectively, a diagram of a non-Gray 8-PSK modulation scheme, and a Gray 8-PSK modulation, each of which can be used in the system of FIG. 1;

FIG. 9 is a graph showing performance between codes utilizing Gray labeling versus non-Gray labeling;

FIG. 10 is a flow chart of the operation of the LDPC decoder using non-Gray mapping, according to an embodiment of the present invention;

FIG. 11 is a flow chart of the operation of the LDPC decoder of FIG. 3 using Gray mapping, according to an embodiment of the present invention;

FIGS. 12A-12C are diagrams of the interactions between the check nodes and the bit nodes in a decoding process, according to an embodiment of the present invention;

FIGS. 13A and 13B are flowcharts of processes for computing outgoing messages between the check nodes and the bit nodes using, respectively, a forward-backward approach and a parallel approach, according to various embodiments of the present invention;

FIGS. 14A-14C are graphs showing simulation results of LDPC codes generated in accordance with various embodiments of the present invention;

FIGS. 15A and 15B are diagrams of the top edge and bottom edge, respectively, of memory organized to support structured access as to realize randomness in LDPC coding, according to an embodiment of the present invention; and

FIG. 16 is a diagram of a computer system that can perform the processes of encoding and decoding of LDPC codes, in accordance with embodiments of the present invention.

#### DESCRIPTION OF THE PREFERRED EMBODIMENT

A system, method, and software for efficiently decoding structured Low Density Parity Check (LDPC) codes are described. In the following description, for the purposes of explanation, numerous specific details are set forth in order to provide a thorough understanding of the present invention. It is apparent, however, to one skilled in the art that the present invention may be practiced without these specific details or with an equivalent arrangement. In other instances, well-known structures and devices are shown in block diagram form in order to avoid unnecessarily obscuring the present invention.

FIG. 1 is a diagram of a communications system configured to utilize Low Density Parity Check (LDPC) codes, according to an embodiment of the present invention. A digital communications system 100 includes a transmitter 101 that generates signal waveforms across a communication channel 103 to a receiver 105. In this discrete communications system 100, the transmitter 101 has a message source that produces a discrete set of possible messages; each of the possible messages has a corresponding signal waveform. These signal waveforms are attenuated, or otherwise altered, by communications channel 103. To combat the noise channel 103, LDPC codes are utilized.

The LDPC codes that are generated by the transmitter 101 enables high speed implementation without incurring any performance loss. These structured LDPC codes output from the transmitter 101 avoid assignment of a small number of check nodes to the bit nodes already vulnerable to channel errors by virtue of the modulation scheme (e.g., 8-PSK).

Such LDPC codes have a parallelizable decoding algorithm (unlike turbo codes), which advantageously involves simple operations such as addition, comparison and table look-up. Moreover, carefully designed LDPC codes do not exhibit any sign of error floor.

According to one embodiment of the present invention, the transmitter **101** generates, using a relatively simple encoding technique, LDPC codes based on parity check matrices (which facilitate efficient memory access during decoding) to communicate with the receiver **105**. The transmitter **101** employs LDPC codes that can outperform concatenated turbo+RS (Reed-Solomon) codes, provided the block length is sufficiently large.

FIG. **2** is a diagram of an exemplary transmitter in the system of FIG. **1**. A transmitter **200** is equipped with an LDPC encoder **203** that accepts input from an information source **201** and outputs coded stream of higher redundancy suitable for error correction processing at the receiver **105**. The information source **201** generates k signals from a discrete alphabet, X. LDPC codes are specified with parity check matrices. On the other hand, encoding LDPC codes require, in general, specifying the generator matrices. Even though it is possible to obtain generator matrices from parity check matrices using Gaussian elimination, the resulting matrix is no longer sparse and storing a large generator matrix can be complex.

Encoder **203** generates signals from alphabet Y to a modulator **205** using a simple encoding technique that makes use of only the parity check matrix by imposing structure onto the parity check matrix by constraining certain portion of the matrix to be triangular. The construction of such a parity check matrix is described more fully below in FIG. **6**. Such a restriction results in negligible performance loss, and therefore, constitutes an attractive trade-off.

Modulator **205** maps the encoded messages from encoder **203** to signal waveforms that are transmitted to a transmit antenna **207**, which emits these waveforms over the communication channel **103**. Accordingly, the encoded messages are modulated and distributed to a transmit antenna **207**. The transmissions from the transmit antenna **207** propagate to a receiver, as discussed below.

FIG. **3** is a diagram of an exemplary receiver in the system of FIG. **1**. At the receiving side, a receiver **300** includes a demodulator **301** that performs demodulation of received signals from transmitter **200**. These signals are received at a receive antenna **303** for demodulation. After demodulation, the received signals are forwarded to a decoder **305**, which attempts to reconstruct the original source messages by generating messages, X', in conjunction with a bit metric generator **307**. With non-Gray mapping, the bit metric generator **307** exchanges probability information with the decoder **305** back and forth (iteratively) during the decoding process, which is detailed in FIG. **10**. Alternatively, if Gray mapping is used (according to one embodiment of the present invention), one pass of the bit metric generator is sufficient, in which further attempts of bit metric generation after each LDPC decoder iteration are likely to yield limited performance improvement; this approach is more fully described with respect to FIG. **11**. To appreciate the advantages offered by the present invention, it is instructive to examine how LDPC codes are generated, as discussed in FIG. **4**.

FIG. **4** is a diagram of a sparse parity check matrix, in accordance with an embodiment of the present invention. LDPC codes are long, linear block codes with sparse parity check matrix  $H_{(n-k) \times n}$ . Typically the block length, n, ranges from thousands to tens of thousands of bits. For example, a parity check matrix for an LDPC code of length n=8 and rate

1/2 is shown in FIG. **4**. The same code can be equivalently represented by the bipartite graph, per FIG. **5**.

FIG. **5** is a diagram of a bipartite graph of an LDPC code of the matrix of FIG. **4**. Parity check equations imply that for each check node, the sum (over GF (Galois Field) (2)) of all adjacent bit nodes is equal to zero. As seen in the figure, bit nodes occupy the left side of the graph and are associated with one or more check nodes, according to a predetermined relationship. For example, corresponding to check node  $m_1$ , the following expression exists  $n_1+n_4+n_5+n_8=0$  with respect to the bit nodes.

Returning the receiver **303**, the LDPC decoder **305** is considered a message passing decoder, whereby the decoder **305** aims to find the values of bit nodes. To accomplish this task, bit nodes and check nodes iteratively communicate with each other. The nature of this communication is described below.

From check nodes to bit nodes, each check node provides to an adjacent bit node an estimate ("opinion") regarding the value of that bit node based on the information coming from other adjacent bit nodes. For instance, in the above example if the sum of  $n_4, n_5$  and  $n_8$  "looks like" 0 to  $m_1$ , then  $m_1$  would indicate to  $n_1$  that the value of  $n_1$  is believed to be 0 (since  $n_1+n_4+n_5+n_8=0$ ); otherwise  $m_1$  indicate to  $n_1$  that the value of  $n_1$  is believed to be 1. Additionally, for soft decision decoding, a reliability measure is added.

From bit nodes to check nodes, each bit node relays to an adjacent check node an estimate about its own value based on the feedback coming from its other adjacent check nodes. In the above example  $n_1$  has only two adjacent check nodes  $m_1$  and  $m_3$ . If the feedback coming from  $m_3$  to  $n_1$  indicates that the value of  $n_1$  is probably 0, then  $n_1$  would notify  $m_1$  that an estimate of  $n_1$ 's own value is 0. For the case in which the bit node has more than two adjacent check nodes, the bit node performs a majority vote (soft decision) on the feedback coming from its other adjacent check nodes before reporting that decision to the check node it communicates. The above process is repeated until all bit nodes are considered to be correct (i.e., all parity check equations are satisfied) or until a predetermined maximum number of iterations is reached, whereby a decoding failure is declared.

FIG. **6** is a diagram of a sub-matrix of a sparse parity check matrix, wherein the sub-matrix contains parity check values restricted to the lower triangular region, according to an embodiment of the present invention. As described previously, the encoder **203** (of FIG. **2**) can employ a simple encoding technique by restricting the values of the lower triangular area of the parity check matrix. According to an embodiment of the present invention, the restriction imposed on the parity check matrix is of the form:

$$H_{(n-k) \times n} [A_{(n-k) \times k} B_{(n-k) \times (n-k)}],$$

where B is lower triangular.

Any information block  $i=(i_0, i_1, \dots, i_{k-1})$  is encoded to a codeword  $c=(i_0, i_1, \dots, i_{k-1}, p_0, p_1, \dots, p_{n-k-1})$  using  $Hc^T=0$ , and recursively solving for parity bits; for example,

$$a_{00}i_0+a_{01}i_1+\dots+a_{0,k-1}i_{k-1}+p_0=0 \Rightarrow \text{Solve } p_0,$$

$$a_{10}i_0+a_{11}i_1+\dots+a_{1,k-1}i_{k-1}+b_{10}p_0+p_1=0 \Rightarrow \text{Solve } p_1$$

and similarly for  $p_2, p_3, \dots, p_{n-k-1}$ .

FIG. **7** is a graph showing performance between codes utilizing unrestricted parity check matrix (H matrix) versus restricted H matrix of FIG. **6**. The graph shows the performance comparison between two LDPC codes: one with a general parity check matrix and the other with a parity check matrix restricted to be lower triangular to simplify encoding. The modulation scheme, for this simulation, is 8-PSK. The performance loss is within 0.1 dB. Therefore, the perfor-

7

mance loss is negligible based on the restriction of the lower triangular H matrices, while the gain in simplicity of the encoding technique is significant. Accordingly, any parity check matrix that is equivalent to a lower triangular or upper triangular under row and/or column permutation can be utilized for the same purpose.

FIGS. 8A and 8B are, respectively, a diagram of a non-Gray 8-PSK modulation scheme, and a Gray 8-PSK modulation, each of which can be used in the system of FIG. 1. The non-Gray 8-PSK scheme of FIG. 8A can be utilized in the receiver of FIG. 3 to provide a system that requires very low Frame Erasure Rate (FER). This requirement can also be satisfied by using a Gray 8-PSK scheme, as shown in FIG. 8B, in conjunction with an outer code, such as Bose, Chaudhuri, and Hocquenghem (BCH), Hamming, or Reed-Solomon (RS) code.

Under this scheme, there is no need to iterate between the LDPC decoder 305 (FIG. 3) and the bit metric generator 307, which may employ 8-PSK modulation. In the absence of an outer code, the LDPC decoder 305 using Gray labeling exhibit an earlier error floor, as shown in FIG. 9 below.

FIG. 9 is a graph showing performance between codes utilizing Gray labeling versus non-Gray labeling of FIGS. 8A and 8B. The error floor stems from the fact that assuming correct feedback from LDPC decoder 305, regeneration of 8-PSK bit metrics is more accurate with non-Gray labeling since the two 8-PSK symbols with known two bits are further apart with non-Gray labeling. This can be equivalently seen as operating at higher Signal-to-Noise Ratio (SNR). Therefore, even though error asymptotes of the same LDPC code using Gray or non-Gray labeling have the same slope (i.e., parallel to each other), the one with non-Gray labeling passes through lower FER at any SNR.

On the other hand, for systems that do not require very low FER, Gray labeling without any iteration between LDPC decoder 305 and 8-PSK bit metric generator 307 may be more suitable because re-generating 8-PSK bit metrics before every LDPC decoder iteration causes additional complexity. Moreover, when Gray labeling is used, re-generating 8-PSK bit metrics before every LDPC decoder iteration yields only very slight performance improvement. As mentioned previously, Gray labeling without iteration may be used for systems that require very low FER, provided an outer code is implemented.

The choice between Gray labeling and non-Gray labeling depends also on the characteristics of the LDPC code. Typically, the higher bit or check node degrees, the better it is for Gray labeling, because for higher node degrees, the initial feedback from LDPC decoder 305 to 8-PSK (or similar higher order modulation) bit metric generator 307 deteriorates more with non-Gray labeling.

When 8-PSK (or similar higher order) modulation is utilized with a binary decoder, it is recognized that the three (or more) bits of a symbol are not received "equally noisy". For example with Gray 8-PSK labeling, the third bit of a symbol is considered more noisy to the decoder than the other two bits. Therefore, the LDPC code design does not assign a small number of edges to those bit nodes represented by "more noisy" third bits of 8-PSK symbol so that those bits are not penalized twice.

FIG. 10 is a flow chart of the operation of the LDPC decoder using non-Gray mapping, according to an embodiment of the present invention. Under this approach, the LDPC decoder and bit metric generator iterate one after the other. In this example, 8-PSK modulation is utilized; however, the same principles apply to other higher modulation schemes as well. Under this scenario, it is assumed that the demodulator

8

301 outputs a distance vector, d, denoting the distances between received noisy symbol points and 8-PSK symbol points to the bit metric generator 307, whereby the vector components are as follows:

$$d_i = -\frac{E_s}{N_0} \{(r_x - s_{i,x})^2 + (r_y - s_{i,y})^2\} \quad i = 0, 1, \dots, 7.$$

The 8-PSK bit metric generator 307 communicates with the LDPC decoder 305 to exchange a priori probability information and a posteriori probability information, which respectively are represented as u, and a. That is, the vectors u and a respectively represent a priori and a posteriori probabilities of log likelihood ratios of coded bits.

The 8-PSK bit metric generator 307 generates the a priori likelihood ratios for each group of three bits as follows. First, extrinsic information on coded bits is obtained:

$$e_j = a_j - u_j, j=0,1,2.$$

Next, 8-PSK symbol probabilities, p<sub>i</sub>, i=0,1, . . . ,7, are determined.

$$*y_j = -f(0, e_j), j=0,1,2 \text{ where } f(a,b) = \max(a,b) + LUT_f(a,b) \text{ with } LUT_f(a,b) = \ln(1 + e^{-|a-b|})$$

$$*x_j = y_j + e_j, j=0,1,2$$

$$*p_0 = x_0 + x_1 + x_2, p_4 = y_0 + x_1 + x_2$$

$$p_1 = x_0 + x_1 + y_2, p_5 = y_0 + x_1 + y_2$$

$$p_2 = x_0 + y_1 + x_2, p_6 = y_0 + y_1 + x_2$$

$$p_3 = x_0 + y_1 + y_2, p_7 = y_0 + y_1 + y_2$$

Next, the bit metric generator 307 determines a priori log likelihood ratios of the coded bits as input to LDPC decoder 305, as follows:

$$u_0 = f(d_0 + p_0, d_1 + p_1, d_2 + p_2, d_3 + p_3) - f(d_4 + p_4, d_5 + p_5, d_6 + p_6, d_7 + p_7) - e_0$$

$$u_1 = f(d_0 + p_0, d_1 + p_1, d_4 + p_4, d_5 + p_5) - f(d_2 + p_2, d_3 + p_3, d_6 + p_6, d_7 + p_7) - e_1$$

$$u_2 = f(d_0 + p_0, d_2 + p_2, d_4 + p_4, d_6 + p_6) - f(d_1 + p_1, d_3 + p_3, d_5 + p_5, d_7 + p_7) - e_2$$

It is noted that the function f(.) with more than two variables can be evaluated recursively; e.g. f(a,b,c)=f(f(a,b),c).

The operation of the LDPC decoder 305 utilizing non-Gray mapping is now described. In step 1001, the LDPC decoder 305 initializes log likelihood ratios of coded bits, v, before the first iteration according to the following (and as shown in FIG. 12A):

$$v_{n \rightarrow k_i} = u_n, n=0,1, \dots, N-1, i=1,2, \dots, \text{deg}(\text{bit node } n)$$

Here,  $v_{n \rightarrow k_i}$  denotes the message that goes from bit node n to its adjacent check node k<sub>i</sub>, u<sub>n</sub> denotes the demodulator output for the bit n and N is the codeword size.

In step 1003, a check node, k, is updated, whereby the input v yields the output w. As seen in FIG. 12B, the incoming messages to the check node k from its d<sub>a</sub> adjacent bit nodes are denoted by  $v_{n_1 \rightarrow k}, v_{n_2 \rightarrow k}, \dots, v_{n_{d_c} \rightarrow k}$ . The goal is to compute the outgoing messages from the check node k back to d<sub>c</sub> adjacent bit nodes. These messages are denoted by

$$w_{k \rightarrow n_1}, w_{k \rightarrow n_2}, \dots, w_{k \rightarrow n_{d_c}}, \text{ where}$$

$$w_{k \rightarrow n_i} = g(v_{n_1 \rightarrow k}, v_{n_2 \rightarrow k}, \dots, v_{n_{i-1} \rightarrow k}, v_{n_{i+1} \rightarrow k}, \dots, v_{n_{d_c} \rightarrow k}).$$

The function  $g(\cdot)$  is defined as follows:

$$g(a,b)=\text{sign}(a)\times\text{sign}(b)\times\{\min(|a|,|b|)\}+LUT_g(a,b),$$

where  $LUT_g(a,b)=\ln(1+e^{-|a+b|})-\ln(1+e^{-|a-b|})$ . Similar to function  $f$ , function  $g$  with more than two variables can be evaluated recursively.

Next, the decoder **305**, per step **1005**, outputs a posteriori probability information (FIG. **12C**), such that:

$$a_n = u_n + \sum_j w_{k_j \rightarrow n}.$$

Per step **1007**, it is determined whether all the parity check equations are satisfied. If these parity check equations are not satisfied, then the decoder **305**, as in step **1009**, re-derives 8-PSK bit metrics and channel input  $u_n$ . Next, the bit node is updated, as in step **1011**. As shown in FIG. **14C**, the incoming messages to the bit node  $n$  from its  $d_v$  adjacent check nodes are denoted by  $w_{k_1 \rightarrow n}, w_{k_2 \rightarrow n}, \dots, w_{k_{d_v} \rightarrow n}$ . The outgoing messages from the bit node  $n$  are computed back to  $d_v$  adjacent check nodes; such messages are denoted by  $v_{n \rightarrow k_1}, v_{n \rightarrow k_2}, \dots, v_{n \rightarrow k_{d_v}}$  and computed as follows:

$$v_{n \rightarrow k_i} = u_n + \sum_{j \neq i} w_{k_j \rightarrow n}$$

In step **1013**, the decoder **305** outputs the hard decision (in the case that all parity check equations are satisfied):

$$\hat{c}_n = \begin{cases} 0, & a_n \geq 0 \\ 1, & a_n < 0 \end{cases}$$

Stop if  $H\hat{c}^T = 0$

The above approach is appropriate when non-Gray labeling is utilized. However, when Gray labeling is implemented, the process of FIG. **11** is executed.

FIG. **11** is a flow chart of the operation of the LDPC decoder of FIG. **3** using Gray mapping, according to an embodiment of the present invention. When Gray labeling is used, bit metrics are advantageously generated only once before the LDPC decoder, as re-generating bit metrics after every LDPC decoder iteration may yield nominal performance improvement. As with steps **1001** and **1003** of FIG. **10**, initialization of the log likelihood ratios of coded bits,  $v$ , are performed, and the check node is updated, per steps **1101** and **1103**. Next, the bit node  $n$  is updated, as in step **1105**. Thereafter, the decoder outputs the a posteriori probability information (step **1107**). In step **1109**, a determination is made whether all of the parity check equations are satisfied; if so, the decoder outputs the hard decision (step **1111**). Otherwise, steps **1103-1107** are repeated.

FIG. **13A** is a flowchart of process for computing outgoing messages between the check nodes and the bit nodes using a forward-backward approach, according to an embodiment of the present invention. For a check node with  $d_c$  adjacent edges, the computation of  $d_c(d_c-1)$  and numerous  $g(\dots)$  functions are performed. However, the forward-backward approach reduces the complexity of the computation to  $3(d_c-2)$ , in which  $d_c-1$  variables are stored.

Referring to FIG. **12B**, the incoming messages to the check node  $k$  from  $d_c$  adjacent bit nodes are denoted by  $v_{n_1 \rightarrow k}$ ,

$v_{n_2 \rightarrow k}, \dots, v_{n_{d_c} \rightarrow k}$ . It is desired that the outgoing messages are computed from the check node  $k$  back to  $d_c$  adjacent bit nodes; these outgoing messages are denoted by  $w_{k \rightarrow n_1}, w_{k \rightarrow n_2}, \dots, w_{k \rightarrow n_{d_c}}$ .

Under the forward-backward approach to computing these outgoing messages, forward variables,  $f_1, f_2, \dots, f_{d_c}$ , are defined as follows:

$$\begin{aligned} f_1 &= v_{1 \rightarrow k} \\ f_2 &= g(f_1, v_{2 \rightarrow k}) \\ f_3 &= g(f_2, v_{3 \rightarrow k}) \\ &\vdots \\ f_{d_c} &= g(f_{d_c-1}, v_{d_c \rightarrow k}) \end{aligned}$$

In step **1301**, these forward variables are computed, and stored, per step **1303**.

Similarly, backward variables,  $b_1, b_2, \dots, b_{d_c}$ , are defined by the following:

$$\begin{aligned} b_{d_c} &= v_{d_c \rightarrow k} \\ b_{d_c-1} &= g(b_{d_c}, v_{d_c-1 \rightarrow k}) \\ &\vdots \\ b_1 &= g(b_2, v_{1 \rightarrow k}) \end{aligned}$$

In step **1305**, these backward variables are then computed. Thereafter, the outgoing messages are computed, as in step **1307**, based on the stored forward variables and the computed backward variables. The outgoing messages are computed as follows:

$$\begin{aligned} w_{k \rightarrow 1} &= b_2 \\ w_{k \rightarrow i} &= g(f_{i-1}, b_{i+1}) \quad i=2,3, \dots, d_c-1 \\ w_{k \rightarrow d_c} &= f_{d_c-1} \end{aligned}$$

Under this approach, only the forward variables,  $f_2, f_3, \dots, f_{d_c}$ , are required to be stored. As the backward variables  $b_i$  are computed, the outgoing messages,  $w_{k \rightarrow i}$ , are simultaneously computed, thereby negating the need for storage of the backward variables.

The computation load can be further enhanced by a parallel approach, as next discussed.

FIG. **13B** is a flowchart of process for computing outgoing messages between the check nodes and the bit nodes using a parallel approach, according to an embodiment of the present invention. For a check node  $k$  with inputs  $v_{n_1 \rightarrow k}, v_{n_2 \rightarrow k}, \dots, v_{n_{d_c} \rightarrow k}$  from  $d_c$  adjacent bit nodes, the following parameter is computed, as in step **1311**:

$$\gamma_k = g(v_{n_1 \rightarrow k}, v_{n_2 \rightarrow k}, \dots, v_{n_{d_c} \rightarrow k}).$$

It is noted that the  $g(\dots)$  function can also be expressed as follows:

$$g(a, b) = \ln \frac{1 + e^{a+b}}{e^a + e^b}.$$

Exploiting the recursive nature of the  $g(\dots)$  function, the following expression results:



$$\gamma_k = \ln \frac{1 + e^{g(v_{n_1 \rightarrow k} \dots v_{n_{i-1} \rightarrow k} v_{n_{i+1} \rightarrow k} \dots v_{n_{d_c \rightarrow k}})^{+\gamma_{n_i \rightarrow k}}}}{e^{g(v_{n_1 \rightarrow k} \dots v_{n_{i-1} \rightarrow k} v_{n_{i+1} \rightarrow k} \dots v_{n_{d_c \rightarrow k}})} + e^{v_{n_i \rightarrow k}}} = \ln \frac{1 + e^{w_{k \rightarrow n_i} + v_{n_i \rightarrow k}}}{e^{w_{k \rightarrow n_i}} + e^{v_{n_i \rightarrow k}}}$$

Accordingly,  $w_{k \rightarrow n_i}$  can be solved in the following manner:

$$w_{k \rightarrow n_i} = \ln \frac{e^{v_{n_i \rightarrow k} + \gamma_k} - 1}{e^{v_{n_i \rightarrow k} - \gamma_k} - 1} - \gamma_k$$

The  $\ln(\cdot)$  term of the above equation can be obtained using a look-up table  $LUT_x$  that represents the function  $\ln(e^x - 1)$  (step 1313). Unlike the other look-up tables  $LUT_f$  or  $LUT_g$ , the table  $LUT_x$  would likely require as many entries as the number of quantization levels. Once  $\gamma_k$  is obtained, the calculation of  $w_{k \rightarrow n_i}$  for all  $n_i$  can occur in parallel using the above equation, per step 1315.

The computational latency of  $\gamma_k$  is advantageously  $\log_2(d_c)$ .

FIGS. 14A-14C are graphs showing simulation results of LDPC codes generated in accordance with various embodiments of the present invention. In particular, FIGS. 14A-14C show the performance of LDPC codes with higher order modulation and code rates of 3/4 (QPSK, 1.485 bits/symbol), 2/3 (8-PSK, 1.980 bits/symbol), and 5/6 (8-PSK, 2.474 bits/symbol).

Two general approaches exist to realize the interconnections between check nodes and bit nodes: (1) a fully parallel approach, and (2) a partially parallel approach. In fully parallel architecture, all of the nodes and their interconnections are physically implemented. The advantage of this architecture is speed.

The fully parallel architecture, however, may involve greater complexity in realizing all of the nodes and their connections. Therefore with fully parallel architecture, a smaller block size may be required to reduce the complexity. In that case, for the same clock frequency, a proportional reduction in throughput and some degradation in FER versus Es/No performance may result.

The second approach to implementing LDPC codes is to physically realize only a subset of the total number of the nodes and use only these limited number of "physical" nodes to process all of the "functional" nodes of the code. Even though the LDPC decoder operations can be made extremely simple and can be performed in parallel, the further challenge in the design is how the communication is established between "randomly" distributed bit nodes and check nodes. The decoder 305 (of FIG. 3), according to one embodiment of the present invention, addresses this problem by accessing memory in a structured way, as to realize a seemingly random code. This approach is explained with respect to FIGS. 15A and 15B.

FIGS. 15A and 15B are diagrams of the top edge and bottom edge, respectively, of memory organized to support structured access as to realize randomness in LDPC coding, according to an embodiment of the present invention. Structured access can be achieved without compromising the performance of a truly random code by focusing on the generation of the parity check matrix. In general, a parity check matrix can be specified by the connections of the check nodes with the bit nodes. For example, the bit nodes are divided into groups of 392 (392 is provided for the purposes of illustration). Additionally, assuming the check nodes connected to the first bit node of degree 3, for instance, are numbered as a,

b and c, then the check nodes connected to the second bit node are numbered as a+p, b+p and c+p, the check nodes connected to the third bit node are numbered as a+2p, b+2p and c+2p etc. For the next group of 392 bit nodes, the check nodes connected to the first bit node are different from a, b, c so that with a suitable choice of p, all the check nodes have the same degree. A random search is performed over the free constants such that the resulting LDPC code is cycle-4 and cycle-6 free.

The above arrangement facilitates memory access during check node and bit node processing. The values of the edges in the bipartite graph can be stored in a storage medium, such as random access memory (RAM). It is noted that for a truly random LDPC code during check node and bit node processing, the values of the edges would need to be accessed one by one in a random fashion. However, such an access scheme would be too slow for a high data rate application. The RAM of FIGS. 15A and 15B are organized in a manner, whereby a large group of relevant edges can be fetched in one clock cycle; accordingly, these values are placed "together" in memory. It is observed that, in actuality, even with a truly random code, for a group of check nodes (and respectively bit nodes), the relevant edges can be placed next to one another in RAM, but then the relevant edges adjacent to a group of bit nodes (respectively check nodes) will be randomly scattered in RAM. Therefore, the "togetherness," under the present invention, stems from the design of the parity check matrices themselves. That is, the check matrix design ensures that the relevant edges for a group of bit nodes and check nodes are simultaneously placed together in RAM.

As seen in FIGS. 15A and 15B, each box contains the value of an edge, which is multiple bits (e.g., 6). Edge RAM, according to one embodiment of the present invention, is divided into two parts: top edge RAM (FIG. 15A) and bottom edge RAM (FIG. 15B). Bottom edge RAM contains the edges between bit nodes of degree 2, for example, and check nodes. Top edge RAM contains the edges between bit nodes of degree greater than 2 and check nodes. Therefore, for every check node, 2 adjacent edges are stored in the bottom RAM, and the rest of the edges are stored in the top edge RAM.

Continuing with the above example, a group of 392 bit nodes and 392 check nodes are selected for processing at a time. For 392 check node processing, q consecutive rows are accessed from the top edge RAM, and 2 consecutive rows from the bottom edge RAM. In this instance, q+2 is the degree of each check node. For bit node processing, if the group of 392 bit nodes has degree 2, their edges are located in 2 consecutive rows of the bottom edge RAM. If the bit nodes have degree d>2, their edges are located in some d rows of the top edge RAM. The address of these d rows can be stored in non-volatile memory, such as Read-Only Memory (ROM). The edges in one of the rows correspond to the first edges of 392 bit nodes, the edges in another row correspond to the second edges of 392 bit nodes, etc. Moreover for each row, the column index of the edge that belongs to the first bit node in the group of 392 can also be stored in ROM. The edges that correspond to the second, third, etc. bit nodes follow the starting column index in a "wrapped around" fashion. For example, if the j<sup>th</sup> edge in the row belongs to the first bit node, then the (j+1)<sup>st</sup> edge belongs to the second bit node, (j+2)<sup>nd</sup> edge belongs to the third bit node, . . . , and (j-1)<sup>st</sup> edge belongs to the 392<sup>th</sup> bit node.

With the above organization (shown in FIGS. 15A and 15B), speed of memory access is greatly enhanced during LDPC coding.

FIG. 16 illustrates a computer system 1600 upon which an embodiment according to the present invention can be implemented. The computer system 1600 includes a bus 1601 or

other communication mechanism for communicating information, and a processor **1603** coupled to the bus **1601** for processing information. The computer system **1600** also includes main memory **1605**, such as a random access memory (RAM) or other dynamic storage device, coupled to the bus **1601** for storing information and instructions to be executed by the processor **1603**. Main memory **1605** can also be used for storing temporary variables or other intermediate information during execution of instructions to be executed by the processor **1603**. The computer system **1600** further includes a read only memory (ROM) **1607** or other static storage device coupled to the bus **1601** for storing static information and instructions for the processor **1603**. A storage device **1609**, such as a magnetic disk or optical disk, is additionally coupled to the bus **1601** for storing information and instructions.

The computer system **1600** may be coupled via the bus **1601** to a display **1611**, such as a cathode ray tube (CRT), liquid crystal display, active matrix display, or plasma display, for displaying information to a computer user. An input device **1613**, such as a keyboard including alphanumeric and other keys, is coupled to the bus **1601** for communicating information and command selections to the processor **1603**. Another type of user input device is cursor control **1615**, such as a mouse, a trackball, or cursor direction keys for communicating direction information and command selections to the processor **1603** and for controlling cursor movement on the display **1611**.

According to one embodiment of the invention, generation of LDPC codes is provided by the computer system **1600** in response to the processor **1603** executing an arrangement of instructions contained in main memory **1605**. Such instructions can be read into main memory **1605** from another computer-readable medium, such as the storage device **1609**. Execution of the arrangement of instructions contained in main memory **1605** causes the processor **1603** to perform the process steps described herein. One or more processors in a multi-processing arrangement may also be employed to execute the instructions contained in main memory **1605**. In alternative embodiments, hard-wired circuitry may be used in place of or in combination with software instructions to implement the embodiment of the present invention. Thus, embodiments of the present invention are not limited to any specific combination of hardware circuitry and software.

The computer system **1600** also includes a communication interface **1617** coupled to bus **1601**. The communication interface **1617** provides a two-way data communication coupling to a network link **1619** connected to a local network **1621**. For example, the communication interface **1617** may be a digital subscriber line (DSL) card or modem, an integrated services digital network (ISDN) card, a cable modem, or a telephone modem to provide a data communication connection to a corresponding type of telephone line. As another example, communication interface **1617** may be a local area network (LAN) card (e.g. for Ethernet™ or an Asynchronous Transfer Model (ATM) network) to provide a data communication connection to a compatible LAN. Wireless links can also be implemented. In any such implementation, communication interface **1617** sends and receives electrical, electromagnetic, or optical signals that carry digital data streams representing various types of information. Further, the communication interface **1617** can include peripheral interface devices, such as a Universal Serial Bus (USB) interface, a PCMCIA (Personal Computer Memory Card International Association) interface, etc.

The network link **1619** typically provides data communication through one or more networks to other data devices.

For example, the network link **1619** may provide a connection through local network **1621** to a host computer **1623**, which has connectivity to a network **1625** (e.g. a wide area network (WAN) or the global packet data communication network now commonly referred to as the "Internet") or to data equipment operated by service provider. The local network **1621** and network **1625** both use electrical, electromagnetic, or optical signals to convey information and instructions. The signals through the various networks and the signals on network link **1619** and through communication interface **1617**, which communicate digital data with computer system **1600**, are exemplary forms of carrier waves bearing the information and instructions.

The computer system **1600** can send messages and receive data, including program code, through the network(s), network link **1619**, and communication interface **1617**. In the Internet example, a server (not shown) might transmit requested code belonging to an application program for implementing an embodiment of the present invention through the network **1625**, local network **1621** and communication interface **1617**. The processor **1603** may execute the transmitted code while being received and/or store the code in storage device **1609**, or other non-volatile storage for later execution. In this manner, computer system **1600** may obtain application code in the form of a carrier wave.

The term "computer-readable medium" as used herein refers to any medium that participates in providing instructions to the processor **1603** for execution. Such a medium may take many forms, including but not limited to non-volatile media, volatile media, and transmission media. Non-volatile media include, for example, optical or magnetic disks, such as storage device **1609**. Volatile media include dynamic memory, such as main memory **1605**. Transmission media include coaxial cables, copper wire and fiber optics, including the wires that comprise bus **1601**. Transmission media can also take the form of acoustic, optical, or electromagnetic waves, such as those generated during radio frequency (RF) and infrared (IR) data communications. Common forms of computer-readable media include, for example, a floppy disk, a flexible disk, hard disk, magnetic tape, any other magnetic medium, a CD-ROM, CDRW, DVD, any other optical medium, punch cards, paper tape, optical mark sheets, any other physical medium with patterns of holes or other optically recognizable indicia, a RAM, a PROM, and EPROM, a FLASH-EPROM, any other memory chip or cartridge, a carrier wave, or any other medium from which a computer can read.

Various forms of computer-readable media may be involved in providing instructions to a processor for execution. For example, the instructions for carrying out at least part of the present invention may initially be borne on a magnetic disk of a remote computer. In such a scenario, the remote computer loads the instructions into main memory and sends the instructions over a telephone line using a modem. A modem of a local computer system receives the data on the telephone line and uses an infrared transmitter to convert the data to an infrared signal and transmit the infrared signal to a portable computing device, such as a personal digital assistance (PDA) and a laptop. An infrared detector on the portable computing device receives the information and instructions borne by the infrared signal and places the data on a bus. The bus conveys the data to main memory, from which a processor retrieves and executes the instructions. The instructions received by main memory may optionally be stored on storage device either before or after execution by processor.

Accordingly, the various embodiments of the present invention provide an approach for generating structured Low Density Parity Check (LDPC) codes, as to simplify the encoder and decoder. Structure of the LDPC codes is provided by restricting the parity check matrix to be lower triangular. Also, the approach can advantageously exploit the unequal error protecting capability of LDPC codes on transmitted bits to provide extra error protection to more vulnerable bits of high order modulation constellations (such as 8-PSK (Phase Shift Keying)). The decoding process involves iteratively regenerating signal constellation bit metrics into an LDPC decoder after each decoder iteration or several decoder iterations. The above approach advantageously yields reduced complexity without sacrificing performance.

While the present invention has been described in connection with a number of embodiments and implementations, the present invention is not so limited but covers various obvious modifications and equivalent arrangements, which fall within the purview of the appended claims.

What is claimed is:

1. A method comprising:

encoding information bits according to a low density parity check (LDPC) code;

modulating the encoded information bits using a Gray-coded modulation scheme wherein more vulnerable bits of a signal constellation of the modulation scheme are assigned at least as many parity checks for the LDPC code as less vulnerable bits of the signal constellation such that the modulated encoded information are configured to be iteratively decoded by iteratively regenerating signal constellation bit metrics after one or more decoding iterations.

2. A method according to claim 1, wherein a receiver includes a LDPC decoder configured to perform the decoding, and further includes a bit metric generator, the LDPC decoder being configured to transmit a posteriori probability information based on the a priori probability information generated by the bit metric generator based on distance vector information relating to distances between received noisy symbol points and symbol points of a signal constellation associated with the LDPC codes, the decoder determining whether parity check equations associated with the LDPC codes are satisfied according to the a priori probability and the a posteriori probability information.

3. A method according to claim 1, wherein the signal constellation includes one of 8-PSK (Phase Shift Keying) or QPSK (Quadrature Phase Shift Keying).

4. A method according to claim 1, wherein the LDPC codes are transmitted over a radio communication system that includes a satellite network.

5. A method according to claim 1, wherein information regarding bit nodes and check nodes of the LDPC codes are stored in contiguous physical memory locations of the receiver.

6. A computer-readable storage medium bearing instructions for transmitting messages using low density parity check (LDPC) codes, said instruction, being arranged, upon execution, to cause one or more processors to perform the method of claim 1.

7. A transmitter configured to transmit the LDPC codes in accordance with claim 1.

8. An apparatus comprising:

logic configured to encode information bits according to a low density parity check (LDPC) code;

a modulator configured to modulate the encoded information bits using a Gray-coded modulation scheme

wherein more vulnerable bits of a signal constellation of the modulation scheme are assigned at least as many parity checks for the LDPC code as less vulnerable bits of the signal constellation such that the modulated encoded information are configured to be iteratively decoded by iteratively regenerating signal constellation bit metrics after one or more decoding iterations.

9. An apparatus according to claim 8, wherein a receiver includes a LDPC decoder configured to perform the decoding, and further includes a bit metric generator, the LDPC decoder being configured to transmit a posteriori probability information based on the a priori probability information generated by the bit metric generator based on distance vector information relating to distances between received noisy symbol points and symbol points of a signal constellation associated with the LDPC codes, the decoder determining whether parity check equations associated with the LDPC codes are satisfied according to the a priori probability and the a posteriori probability information.

10. An apparatus according to claim 8, wherein the signal constellation includes one of 8-PSK (Phase Shift Keying) or QPSK (Quadrature Phase Shift Keying).

11. An apparatus according to claim 8, wherein the LDPC codes are transmitted over a radio communication system that includes a satellite network.

12. An apparatus according to claim 8, wherein information regarding bit nodes and check nodes of the LDPC codes are stored in contiguous physical memory locations of the receiver.

13. A transmitting system comprising:

an encoder configured to encode information bits according to a low density parity check (LDPC) code; and

a transceiver configured to modulate the encoded information bits using a Gray-coded modulation scheme wherein more vulnerable bits of a signal constellation of the modulation scheme are assigned at least as many parity checks for the LDPC code as less vulnerable bits of the signal constellation such that the modulated encoded information are configured to be iteratively decoded by iteratively regenerating signal constellation bit metrics after one or more decoding iterations.

14. A system according to claim 13, wherein a receiver includes a LDPC decoder configured to perform the decoding, and further includes a bit metric generator, the LDPC decoder being configured to transmit a posteriori probability information based on the a priori probability information generated by the bit metric generator based on distance vector information relating to distances between received noisy symbol points and symbol points of a signal constellation associated with the LDPC codes, the decoder determining whether parity check equations associated with the LDPC codes are satisfied according to the a priori probability and the a posteriori probability information.

15. A system according to claim 13, wherein the signal constellation includes one of 8-PSK (Phase Shift Keying) or QPSK (Quadrature Phase Shift Keying).

16. A system according to claim 13, wherein the LDPC codes are transmitted over a radio communication system that includes a satellite network.

17. A system according to claim 13, wherein information regarding bit nodes and check nodes of the LDPC codes are stored in contiguous physical memory locations of the receiver.